



Geographic Management of Cancer Health Disparities Program (GMAP) *Region 2* *November 2016 E-Blast*

You are receiving this email as a Cancer Researcher in GMAP Region 2

Greetings from the Geographic Management of Cancer Health Disparities (GMAP) Region 2 team.

GMAP is an integrated network of 7 hubs across the United States. Moffitt Cancer Center in Tampa, FL. serves as the hub for GMAP Region 2 (previously Region 3), which currently includes more than 40 partner institutions in Alabama, Arkansas, Florida, Georgia, Louisiana, Missouri, Mississippi and Puerto Rico.

WHAT DOES GMAP REGION 2 OFFER?

Trainee/Early Career Scientists Travel and Pre - Submission Expert Grant Review Awards

- ◆ Travel scholarships for trainees/investigators to attend advanced cancer disparities trainings and/or to present their work.
- ◆ Supports peer review of grant proposals by outside experts prior to submission. Applicants should also consult with NCI CRCHD program directors.

Cancer Health Disparities Targeted Training

- ◆ Supports cohort of 10 junior investigators for 2 day targeted career development activities at Moffitt Cancer Center intending to submit career development award.

Collaborative Inter-institutional Research Pilot Funding

- ◆ Pilot funds to support collaborations between two or more institutions to generate feasibility data for larger research/education projects.

Collaborative Cluster meeting Awards

- ◆ Supports meetings of clusters of investigators to fuel research collaborations.

Regional Communications about Current Research and Training Opportunities

- ◆ Monthly E-blasts and quarterly newsletters on funding and training opportunities.

[Click to Visit our GMAP Region 2 Website](#)

Do you need feedback from senior researchers prior to submitting a competitive

grant application?



The **Expert Grant Review** award is intended to assist New Investigators and Early Stage Investigators who are applying for funding awards with feedback from senior researchers in the region. This award supports pre-submission peer review of grant proposals by outside experts.

For more information [click](#) below:

[EXPERT GRANT REVIEW APPLICATION!](#)



Planning to attend a workshop or conference to present your Cancer Health Disparities (CHD) research?

For more information [click](#) below:

[TRAVEL AWARDS APPLICATION!](#)



Are you looking for pilot funding for your Cancer health Disparities (CHD) project?

The **pilot funding** in Cancer and Cancer Health Disparities research and training award is available to generate feasibility data for larger research/education projects between investigators from at least two or more institutions in GMaP Region 2 focused on the elimination of Cancer Health Disparities (CHD).

For more information [click](#) below:

[PILOT FUNDING AWARD APPLICATION](#)



Do you need funding to help plan your Cancer or CHD research and build your research collaborations?

The collaborative cluster award is designed to promote the planning of activities to build inter-disciplinary, inter-institutional collaborations between at least two or more institutions in GMaP Region 2 to develop or expand research that impacts Cancer or CHD research.

For more information [click](#) below:

[COLLABORATIVE CLUSTER AWARD APPLICATION](#)

Mark Your Calendars: Upcoming Events

November 9-12, 2016: [4th Biennial Global Prostate Cancer Disparities Conference](#) in Orlando, FL.

November 9-12, 2016: [Annual Biomedical Research Conference for Minority Students \(BRCMS\)](#) in Tampa, FL.

November 10-11, 2016: [Addressing Health Disparities: The Role of Translational Research](#) in Nashville, TN.

November 14, 2016: [Fourth Annual Celebration of Junior Investigators in Cancer Research](#) in Boston, MA.

November 18, 2016: [Gator Healthcare Forum](#) in Gainesville, FL.

December 5-6, 2016: [First Annual National Summit on the Social Determinants of Health](#) in Chicago, IL.

December 1, 2016: [Open Data Science Symposium](#) in North Bethesda, MD.

December 14-15, 2016: [9th Annual Conference on the Science of Dissemination and Implementation in Health](#) in Washington, D.C.



**National Research Mentoring Network:
Virtual Mentoring**

Students and researchers in the biomedical, behavioral, clinical, and social sciences:

[Click here to access](#)

WEBINARS/TALKS:

**November 4, 2016.
10:00am-11:30am
(EST): Insights Into
Program and Funding
Opportunities at NIMHD.
[To RSVP, Click Here](#)**

**November 4, 2016.
11:00am-12:00pm
(EST): NIH Medical
Research Scholars
Program. [To RSVP, Click Here](#)**

**November 7, 2016.
12:00pm-1:00pm (ET):
Men and Prostate
Cancer. [To RSVP, Click Here](#)**

**November 16, 2016.
1:00pm-2:00pm (EST):
HEI: Communicating
Health Equity. [To RSVP, Click Here](#)**

**November 17, 2016.
12:00pm-1:00pm (EST):
Lung Cancer Screening:
From Evidence to
Implementation. [To RSVP, Click Here](#)**

**December 1, 2016.
2:00pm-3:00pm (EST):
8 Ways to Successfully
Navigate NIH Peer
Review and Get an RO1
Grant. [To RSVP, Click Here](#)**

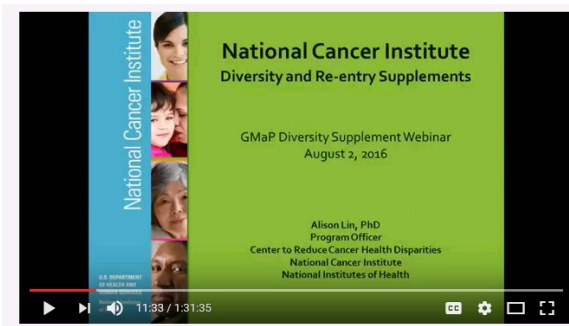
**December 2, 2016.
2:00pm-3:00pm (EST):
NIH Peer Review Briefing
for Basic Research
Applicants and**

The Continuing Umbrella of Research Experiences (CURE)

The Center to Reduce Cancer Health Disparities (CRCHD) CURE program offers unique training and career development opportunities to enhance and increase diversity in the cancer and cancer health disparities research workforce. The CURE program identifies promising candidates from high school through junior investigator levels, and provides them with a continuum of competitive funding opportunities.



For more information on the CURE program, [click here](#).



[Watch Webinar!](#)

[Presentation Slides](#) [Presentation Flyer](#)

Are you interested in a Diversity and Re-entry Supplement?

NCI Diversity supplements support the research training of students, post-baccalaureate and post-masters individual, postdoctoral fellows, and faculty investigators who are members of an underrepresented group.

Learn more about how you can become part of the next generation of competitive investigators in cancer health disparities research by participating in the diversity and re-entry supplements!

AWARDS/SCHOLARSHIPS/INTERNSHIPS

****DEADLINE APPROACHING!**** [AHRQ National Research Service Award \(NRSA\) Program](#). **Application Deadlines: December 8, 2016.**

****DEADLINE APPROACHING!**** [Emerging Global Leader Award for LMIC scientists](#). **Application Deadline: December 14, 2016**

[Research Career Development Awards \(K-Series\)](#) - National Institutes of Health (NIH). **Application Deadlines: Vary**

[NIH Loan Repayment Programs \(LRPs\)](#) - Supporting Scientific Discovery. **Application Deadlines: Vary**

[Society for Public Health Education \(SOPHE\) Student Member Fellowships and Awards.](#) **Application Deadlines: Vary**

[Louisiana Public Health Association Scholarships.](#) **Application Deadlines: Vary**

[LSU School Of Public Health Student Awards.](#) **Application Deadlines: Vary**

[Summer Public Health Scholars Program \(SPHSP\)](#) at the Centers for Disease Control & Prevention in Atlanta, GA. and Columbia University Medical Center in New York City. **Application Deadlines: Vary**

POSTDOCTORAL FELLOWSHIPS

[Health Policy Leadership Fellowship Program](#) - Morehouse School of Medicine in Atlanta, GA. **Application Opens: November 1, 2016**

[Research Career Development Awards \(K-Series\)](#) - National Institutes of Health (NIH). **Application Deadlines: Vary**

[Cancer Immunology and Immunotherapy Postdoctoral Fellowship Opportunity:](#) Immunology, and Molecular Genetics, Division of Surgical Oncology at University of California, Los Angeles (UCLA). For more information, contact: Manuel L. Penichet, M.D., Ph.D. at Email: penichet@mednet.ucla.edu. **Application Deadline: Please Inquire Directly**

[Biobehavioral Cancer Prevention and Control Training Program](#) - University of Washington. **Application Deadlines: Vary**

[Cancer-Related Health Disparities Education and Career Development Program](#) - University of Minnesota. For more information contact: Colleen Doyle at E-mail: phdr@umn.edu. **Application Deadline: Please Inquire Directly**

[Post-Doctoral Fellowship Positions](#) - Dana-Farber Cancer Institute in Boston, MA. For more information contact: Timothy R. Rebbeck, Ph.D. at E-mail: Timothy_Rebbeck@dfci.harvard.edu. **Application Deadline: Please Inquire Directly**

[Building Healthy Urban Communities Health Disparities Fellows](#) - Rush University Medical Center in Chicago, IL. **Application Deadline: Please Inquire Directly**

TRAINING/ FELLOWSHIPS

****NEW**** [Cancer Research Training Award Fellowship in Clinical and Translational Epidemiology](#) - National Cancer Institute (NCI)

****DEADLINE APPROACHING!**** [NCHS/AcademyHealth Health Policy Fellowship program](#). National Center for Health Statistics. **Application Deadline: November 7, 2016.**

[Cancer Epidemiology and Genetics Fellowships](#) - National Cancer Institute (NCI)

[Cancer Biology PhD Program](#) - Moffitt Cancer Center in Tampa, FL.

[Behavioral Oncology Program](#) - Moffitt Cancer Center in Tampa, FL.

[Fellowship & Residency at Emory](#) - Winship Cancer Institute of Emory University in Atlanta, GA.

[Fellowship: Health Communication](#) - Centers for Disease Control and Prevention (CDC) and The Research Participation Program for CDC is administered by the Oak Ridge Institute for Science and Education (ORISE). in Atlanta, GA.

[Summer Public Health Scholars Program \(SPHSP\)](#) - Centers for Disease Control and Prevention (CDC), Office of Minority Health, and Health Equity (OMHHE).

[University of South Florida Residency and Fellowship Programs](#) based at Moffitt Cancer Center in Tampa, FL.

[Applied Public Health Informatics Fellowship \(APHIF\)](#) supported by the Centers for Disease Control and Prevention (CDC), Council of State and Territorial Epidemiologists (CSTE), and the National Association of County and City Health Officials (NACCHO). Locations Vary.

[Global Noncommunicable Diseases and Injury Research](#) sponsored by National Institutes of Health (NIH).

[AZ-PRIDESummer Institute Training Programs](#) - The University of Arizona Health Sciences

[CancerResearch Training Award Fellow Sought for Clinical and Translational Epidemiology](#) - National Cancer Institute (NCI)

[Career911: Your Future Job in Medicine and Healthcare](#) - Northwestern University

[Public Health Informatics Fellowship, in the Atlanta, Georgia.](#) - Centers for Disease Control and Prevention (CDC).

[Carnegie African Diaspora Fellowship Program](#) - Institute of International Education

JOB OPPORTUNITIES

****NEW** ASSISTANT/ASSOCIATE PROFESSOR - [Drexel University](#)**

[School of Public Health](#) in Philadelphia, PA. Questions regarding the position should be directed to the Research Committee Co-Chairs, Dr. Michael Yudell at myudell@drexel.edu, or Dr. Ana Martinez-Donate at apm78@drexel.edu

*****NEW*** ASSISTANT/ASSOCIATE PROFESSOR - [Department of Epidemiology](#).** Rollins School of Public Health of Emory University in Atlanta, GA. For more information, contact Dr. Carolyn Drews-Botsch, at cdrews@emory.edu

ASSISTANT/ASSOCIATE PROFESSOR - [University of South Carolina College of Nursing](#) in Columbia, SC. For more information, contact Dr. Beverly Baliko, Chair of the Search Committee at E-mail: balikob@mailbox.sc.edu

ASSISTANT/ASSOCIATE PROFESSOR - Rural Health Research Investigator. [University of Alabama College of Community Health Sciences](#) in Tuscaloosa, AL. For more information contact: John C. Higginbotham, PhD, MPH Chair, Department of Community and Rural Medicine at E-mail: jhigginb@ua.edu

ASSISTANT/ASSOCIATE PROFESSOR- Department of Public Health. [Bethune-Cookman University College of Health Sciences](#) in Daytona Beach, FL

ASSOCIATE PROFESSOR - [Department of Biostatistical Sciences](#). Wake Forest University School of Medicine in Winston-Salem, NC. Please send applications to dbsrecruit@wakehealth.edu

*****NEW*** ASSISTANT PROFESSOR (NUTRITION) - [Department of Community and Family Health](#).** University of South Florida, College of Public Health in Tampa, FL.

FUNDING OPPORTUNITIES

****DEADLINE APPROACHING!**** [Extramural Loan Repayment Program for Health Disparities Research \(LRP-HDR\)](#). National Institute on Minority Health and Health Disparities (NIMHD). **Application Deadline: November 15, 2016**

****DEADLINE APPROACHING!**** [Extramural Clinical Research Loan Repayment Program for Individuals from Disadvantaged Backgrounds \(LRP-IDB\)](#). National Institute on Minority Health and Health Disparities (NIMHD). **Application Deadline: November 15, 2016**

****DEADLINE APPROACHING!**** NIH funding opportunities: [Imaging and Biomarkers for Early Detection of Aggressive](#)

[Cancer. Application Receipt/Submission Date\(s\): December 14, 2016](#)

****DEADLINES APPROACHING!**** [CRCHD Funding for Research and Training: Various Application Deadlines](#)

[NIH Funding Opportunities: Various Application Deadlines](#)

PCORI | [Cycle 3 2015 Funding Announcements. Application Deadlines: \(Various\)](#)

[NIMHD Transdisciplinary Collaborative Centers for Health Disparities Research on Chronic Disease Prevention \(Various\). National Institutes of Health. Application Deadlines: \(Various\)](#)

[Administrative Supplements for Research on Sexual and Gender Minority \(SGM\) Populations \(Admin Supp\) - National Institutes of Health. Application Deadlines: \(Various\)](#)

RESOURCES/TOOL

- [Cancer Health Disparities | Did You Know?](#) - National Cancer Institute
- [National Research Mentoring Network](#) – Now live!
- [Questions about building more effective R&D partnerships?](#) We've got answers!
- [The Value of Public Health](#) - American Public Health Association
- [Voices for Healthy Kids Toolkit](#) | Robert Wood Johnson Foundation (RWJF) and American Heart Association (AHA)
- [Pathways to Prevention Workshop: The Role of Opioids in the Treatment of Chronic Pain – FINAL REPORT](#) - National Institutes of Health
- [New Library Acquisitions Monthly Update](#) - Office of Minority Health
- The [National Research Mentoring Network](#) is a fabulous resource for both senior and junior investigators.
- [Promoting Yourself, Your Research and the New NIH Biosketch.](#)
- [Community Outreach Program Linkage](#) - University of Alabama at Birmingham
- [Odessa Chambliss Center for Health Equity](#) - Bethune Cookman University in Florida
- [Research Mentoring](#) - University of Miami in Florida
- [NIH Biosketch](#) - What is new in the New Biosketch?
- NIH Tips on [Writing Your Grant Application](#)
- Find Funded NIH Projects - [NIH Reporter](#)

- [Health Disparities Calculator](#) - National Cancer Institute, NIH (NCI)
- [Cancer Health Disparities Definitions](#) - NCI
- Making the Right Moves: [A Practical Guide to Scientific Management for Postdocs and New Faculty](#), Second Edition (PDF)
- [Center of Excellence on Health Disparities](#) - Morehouse School of Medicine
- [Office for Educational Outreach and Health Careers](#) - Morehouse School of Medicine
- [The Satcher Health Leadership Institute](#) - Atlanta, GA.
- [PR BioBank](#) - The Ponce Research Institute and the Moffitt Cancer Center Partnership
- [Public Health Employment Connection](#) - Updated Job Opportunities Nationwide
- [Careers in Public Health, An Introduction for Master's Level Students, by UAB School of Public Health](#) - Printable Booklet, UAB, School of Public Health

Connect with your GMaP Partners

Institution Name & Email Links



UAB at Birmingham	Tiffany Carson
University of Arkansas - MS	Michael Preston
Moffitt Cancer Center	Kimberly Williams
University of Miami	Erin Kobetz
Bethune Cookman University	Danyell Wilson
Emory University	Theresa Gillespie
Florida A & M University	Renee' Reams
Morehouse School of Medicine	Roland Matthews
Xavier University of Louisiana	Margarita Echeverri
Louisiana State University	Lucio Miele
Tulane University	Roy Weiner
University of Florida	Folakemi Odedina
University of Mississippi	Roy Duhe
Washington University in St. Louis	Bettina Drake
Ponce Health Sciences University	Idhaliz Flores

Cancer Training at NCI

STAY CONNECTED

Become a GMaP Partner and stay connected. Let us know what information you want to know, how can we better help, or if you're interested in collaboration. Do you want us to highlight your programs? Join [GMaP Region 2](#) today and let us know what information you want us to feature in our next newsletter!



GMaP | Region 2 | 813-745-6502  | 813-745-6502  | GMap.Region2@moffitt.org
| [Website](#)

**You are receiving this email as a Cancer
Researcher in GMaP Region 2**

GMaP Region 2 | 12902 Magnolia Drive, Tampa, FL 33612 813-745-6502

[Unsubscribe](#)

[Update Profile](#) | [About our service provider](#)

Sent by kimberly.williams@moffitt.org in collaboration with

Constant Contact 

Try it free today