



Geographic Management of Cancer Health Disparities Program (GMaP) *Region 2* September 2017 E-Blast

You are receiving this email as a Cancer Researcher in GMaP Region 2

GMaP is an integrated network of 7 hubs across the United States. Moffitt Cancer Center in Tampa, FL serves as the hub for GMaP Region 2 (previously Region 3), which currently includes more than 40 partner institutions in Alabama, Arkansas, Florida, Georgia, Louisiana, Missouri, Mississippi and Puerto Rico.



GMaP Region 2 sends our sincerest thoughts and prayers to those of you who have been affected by hurricanes Harvey, Irma and Maria.

[Click to Visit our GMaP Region 2 Website](#)

ICCH & HARC

International Conference on Communication in Healthcare

BALTIMORE



&

Health Literacy Annual Research Conference

October 8-11, 2017

Are you presenting a poster or attending a workshop at a conference?

You can apply for a GMaP Region 2 Trainee/Early Stage Investigator Travel Scholarship to attend the International Conference on Communication in Healthcare (ICCH) & Health Literacy Annual Research Conference (HARC)!

**Travel Awards
APPLY NOW!**



Who can apply:

Early Stage Investigator (ESI) or Trainee/Jr. Faculty attending a workshop or presenting their Cancer Health Disparities (CHD) research.

Award Information:

Up to **\$1,000** reimbursement for meeting expenses

For more information [click](#) below:

[TRAVEL AWARDS APPLICATION!](#)

MARK YOUR CALENDARS!

Upcoming Events

October 8-11, 2017: [International Conference on Communication in Healthcare \(ICCH\) & Health Literacy Annual Research Conference \(HARC\)](#) in Baltimore, MD.

October 22-27, 2017: [Translational Cancer Research for Basic Scientists Workshop](#) in Boston, MA.

October 26- 27, 2017: [Many Faces of Community Health Annual Conference "Community Centered Care and the People We Serve"](#) in Bloomington, MN

October 28-November 1: [Research Centers in Minority Institutions \(RCMI\) Translational Science 2017 Conference](#) in DC

November 4-8, 2017: [America Public Health Association \(APHA\) Annual Meeting and Expo](#) in Atlanta, GA.

December 8, 2017: [Physicians' Education Resources: Lunch and Dinner Symposia at the Annual Hematology Meeting](#) in Atlanta, GA.

Webinars/Talks

October 4, 2017. 1:00–2:30 PM ET: [Pre-Application Webinar on Approaches to Identify and Care for Individuals with Inherited Cancer Syndromes.](#) [Click here to register.](#)

October 5, 2017. 1:00–2:30 PM ET: [A Role for Inflammation-Induced DNA Mismatch Repair Deficits in Racial Outcomes from Advanced Colorectal Cancer.](#) [Click here to register.](#)

AWARDS/SCHOLARSHIPS/INTERNSHIPS

[Research Career Development Awards \(K-Series\)](#) - National Institutes of Health (NIH). **Application deadlines vary**

[NIH Loan Repayment Programs \(LRPs\)](#). **Application deadlines vary**

POSTDOCTORAL FELLOWSHIPS

[Post-doctoral Training Program in Behavioral Oncology](#)- Moffitt Cancer Center in Tampa, FL. **Applications accepted on a rolling basis**

[Post-doctoral Training Program in Molecular Epidemiology of Cancer](#) - Moffitt Cancer Center in Tampa, FL. **Applications accepted on a rolling basis**

[Post-doctoral Fellowship in Cancer Immunology and Immunotherapy](#) - Division of Surgical Oncology, Department of Surgery at the University of California, Los Angeles (UCLA). **Contact Dr. Manuel L. Penichet at penichet@mednet.ucla.edu**

FUNDING OPPORTUNITIES

[Research Supplements to Promote Diversity in Health-Related Research \(NCI Diversity Supplements\)](#). Deadline: **December 1, 2017**.

[Research Supplements to Promote Re-Entry into Biomedical and Behavioral Research Careers \(NCI Re-Entry Supplements\)](#).

Deadline: **December 1, 2017**.

[Opportunities for postdoctoral researchers through the Institute for Broadening Participation \(IBP\)](#). **Various application deadlines**

[Collaborative Minority Health and Health Disparities Research with Tribal Epidemiology Centers \(R01\)](#). National Institute on Minority Health and Health Disparities. Deadline: **December 4, 2017**.

[Collaborative Minority Health and Health Disparities Research with Tribal Epidemiology Centers \(R21\)](#). National Institute on Minority Health and Health Disparities. Deadline: **December 4, 2017**.

[Short-Term Mentored Career Enhancement Awards for Mid-Career Investigators to Integrate Basic Behavioral and Social Sciences](#). National Institute on Minority Health and Health Disparities. **Deadline: March 6, 2018**



Funding Opportunity
Announcements to
support the goals of the
Cancer Moonshot now
open!

TRAINING/FELLOWSHIPS

[NIAID Emerging Leaders in Data Science Fellowship](#) - The National Institute of Allergy and Infectious Diseases. Application deadline: **October 2, 2017**.

[From Biological to Social Processes: Interdisciplinary Training in Life Course Research](#) - New NIH T32 at the Carolina Population Center. Application deadline: **October 15, 2017**.

[Post-baccalaureate Intramural Research Training Award \(Postbac IRTA/CRTA\)](#) - National Cancer Institute (NCI). **Applications accepted on a rolling basis.**

JOB OPPORTUNITIES

[The NIH Intramural Research Program \(IRP\)](#). Click [here](#) for early-career opportunities and senior positions.

[ASSISTANT/ASSOCIATE PROFESSOR](#) - [Department of Biostatistics](#),
College of Public Health and Health Professions and the College of
Medicine, University of Florida, Gainesville, FL.

[ASSISTANT/ASSOCIATE PROFESSOR](#) - [Division of Health Services
Research and Policy in the Department of Public Health Sciences](#),
University of Miami Miller School of Medicine, Miami, FL. For questions
regarding the position, contact Kathryn McCollister, PhD, Division Director
at kmccolli@miami.edu.

[SCIENTIFIC DIRECTOR OF THE DIVISION OF INTRAMURAL RESEARCH](#) -
[National Institute on Minority Health and Health Disparities \(NIMHD\)](#).

ANNOUNCEMENTS



[Cancer Disparities Research Network](#)
CT • IA • IL • IN • MA • MI • MN • NJ
NY • OH • PA • RI • WI

The Cancer Disparities
Research Network
announces the new Cancer
Health Disparities Journal.

Click [here](#) to check it out!

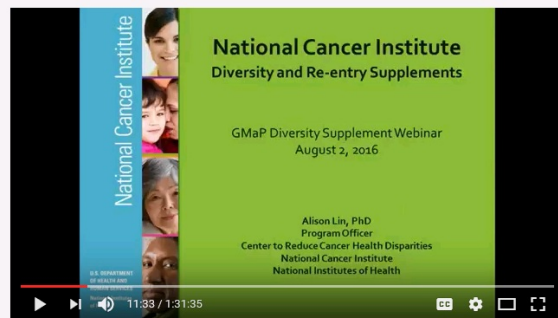


HEALTH DISPARITIES, EDUCATION, AWARENESS, RESEARCH & TRAINING

HDEART Consortium

Click [here](#) to check out a Special Edition of the
HDEART CONSORTIUM NEWSLETTER!

RESOURCES & TOOLS



Watch Webinar!

[Presentation Slides](#) [Presentation Flyer](#)

Are you interested in a Diversity and Re-entry Supplement?

NCI Diversity supplements support the research training of students, post-baccalaureate and post-masters individuals, postdoctoral fellows, and faculty investigators who are members of an underrepresented group.

Learn more about how you can become part of the next generation of competitive investigators in cancer health disparities research by participating in the diversity and re-entry

National Research Mentoring Network: Virtual Mentoring

Students and researchers in the biomedical, behavioral, clinical, and social sciences: Click here to access

[FREE virtual mentorship through NRMN!](#)



- [Cancer Health Disparities | Did You Know?](#) - NCI
- [Promoting Yourself, Your Research and the New NIH Biosketch.](#)
- [NIH Biosketch](#) - What is new in the New Biosketch?
- NIH Tips on [Writing Your Grant Application](#)
- Find Funded NIH Projects - [NIH Reporter](#)
- [Health Disparities Calculator](#) - NCI
- [Cancer Health Disparities Definitions](#) - NCI
- [Public Health Employment Connection](#) - Updated Job Opportunities Nationwide
- [Jobs @ NIH](#) - Explore jobs and training opportunities

Connect with your GMaP Partners

Institution Name & Email Links

UAB at Birmingham

University of Arkansas - MS

Moffitt Cancer Center

University of Miami

Bethune Cookman University

Emory University

Florida A & M University

Morehouse School of Medicine

Xavier University of Louisiana

Louisiana State University

Tulane University

University of Florida

University of Mississippi

Washington University in St. Louis

Ponce Health Sciences University

[Tiffany Carson](#)

[Michael Preston](#)

[Kimberly Williams](#)

[Erin Kobetz](#)

[Danyell Wilson](#)

[Theresa Gillespie](#)

[Renee' Reams](#)

[Roland Matthews](#)

[Margarita Echeverri](#)

[Lucio Miele](#)

[Roy Weiner](#)

[Folakemi Odedina](#)

[Roy Duhe](#)

[Bettina Drake](#)

[Idhaliz Flores](#)

STAY CONNECTED

Become a GMaP Partner and stay connected. Let us know what information you want to know, how can we better help, or if you're interested in collaboration. Do you want us to highlight your programs? Join [GMaP Region 2](#) today and let us know what information you want us to feature in our next newsletter!



GMaP | Region 2 | 813-745-6502 | GMap.Region2@moffitt.org | [Website](#)

**You are receiving this email as a Cancer
Researcher in GMaP Region 2**