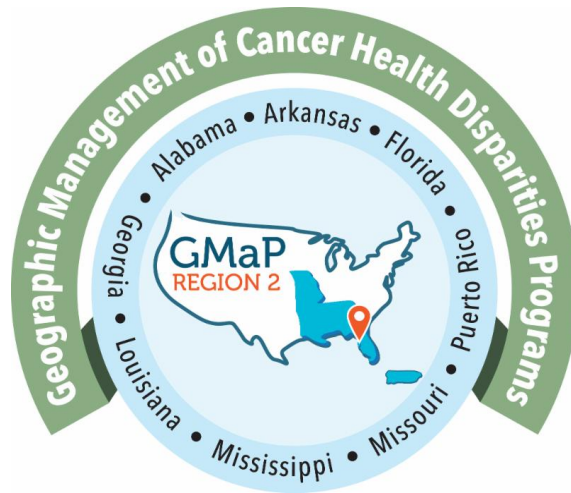


For a PDF version of this email, [click here](#).



Geographic Management of Cancer Health Disparities Program (GMAP) Region 2 *April 2021 E-Blast*

GMAP is an integrated network of 7 regions across the United States. Moffitt Cancer Center in Tampa, FL serves as the hub for GMAP Region 2 which currently includes more than 40 partner institutions in Alabama, Arkansas, Florida, Georgia, Louisiana, Missouri, Mississippi and Puerto Rico.

***You are receiving this email as a Cancer
Researcher in GMAP Region 2***

Connect with GMAP Region 2 on Social Media!



Click to Visit our GMAP Region 2 Website

The Travel Award is intended to support career development related to cancer research or cancer health disparities research. This scholarship will provide reimbursement (e.g. registration, airfare,

Travel Awards APPLY NOW!



hotel, etc.) for ESI's or Trainees to present research at conferences and attend skills workshops/trainings. Applicants must be located in a GMAP Region 2 state/territory, be a trainee or Early Stage Investigator (ESI), and submit a complete application.

To learn more or apply, click [here!](#)



APPLY TO THE GMAP REGION 2 REGISTRATION SUPPORT SCHOLARSHIP TODAY!

The Registration Support Scholarship is intended to support underrepresented scholars and investigators in cancer research or cancer health disparities research by providing reimbursement for registration fees associated with virtual or in-person meetings, conferences, workshops or training.

To learn more or apply, click [here!](#)

NEWS - EVENTS - CONFERENCES



Rachel Hardeman, PhD.



Camara Phyllis Jones, MD.



Michael Osterholm, PhD.



Jaime Slaughter-Acey
(moderator), PhD.

(NEW) The Health Equity Work Group at the UMN School of Public Health is pleased to host the annual Health Disparities Roundtable: *Disparities in COVID-19 — Social Justice, Policy, and Ethical Considerations in Vaccinating the U.S. Population* on **Friday, April 16, 2021 from 9:00 am - 10:30 am CDT**. Join keynote speakers Rachel Hardeman, Camara Phyllis Jones, and Michael Osterholm, for a timely conversation, moderated by Jaime Slaughter-Acey, that will explore COVID-19 policy considerations and vaccination strategies through a lens of social justice and structural racism. Continuing education credits are available.

To register, please visit the [website](#).



www.cancer.gov

Disparities and Barriers to Pediatric Cancer Survivorship Care

(NEW) The "Disparities and Barriers to Pediatric Cancer Survivorship Care" webinar will take place on **April 20, 2021 at 1:00 pm ET** and focus on the recently released Agency for Healthcare Research and Quality (AHRQ) technical brief. The brief was commissioned by the National Cancer Institute (NCI) to support the development of a research agenda associated with the Childhood Cancer Survivorship, Treatment, Access, and Research (STAR) Act. Webinar presenters will discuss the background of the report, its findings, as well as crucial next steps to address disparities and barriers in survivorship care.

To register, please visit the [website](#).



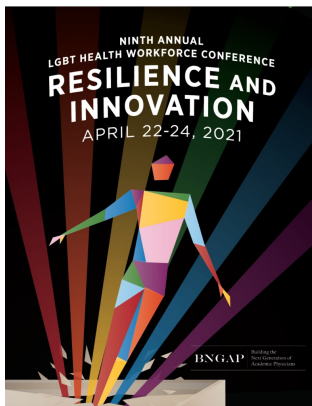
Prioritizing Equity in Public Health Leadership Summit

APRIL 21, 2021 | 11 A.M.-4:45 P.M. ET

astho™

(NEW) Join ASTHO on **April 21, 2021** from 11 a.m. to 5 p.m. ET for a national convening of state and territorial health officials with local and federal partners on Prioritizing Equity in Public Health. This virtual meeting will provide a forum for state and territorial health practitioners to learn about emergent public health issues and apply evidence-based and promising practices to address structural racism and advance health and racial equity. The summit will feature keynote presentations from national thought leaders, breakout discussions, and real-world case examples that can be applied to current public health challenges.

To register, please visit the [website](#).



(NEW) The LGBT Health Workforce Conference is the largest and most well known national LGBT health workforce conference in the United States held annually in New York City. This year it will take place from **April 22-24, 2021**. The conference provides an overview of up-to-date practices (climate, educational, research, and clinical) in preparing the health care workforce to address the health concerns and disparities of lesbian, gay, bisexual, and transgender (LGBT) communities. This conference is designed for health professionals (M.D., D.O., P.A.-C., R.N., N.P., D.D., social workers, psychologists, etc.), educators, and students (pre-health professions, professional schools, and graduate), but all interested are invited to attend. CME credit will be available.

To register, click [here](#).



AAACE | American Association for Cancer Education

(NEW) On **April 28, 2021, from 3:00 to 4:30 PM EDT**, the American Association for Cancer Education (AAACE) will host its next Engagement Lounge on the topic of *How in the World Do I Measure a Partnership?*, sponsored by the AAACE Education Committee. This Engagement Lounge will be moderated by Education Committee Co-Chairs Georgia Robins Sadler, BSN, MBA, PhD, FAACE and Bret Hassel, PhD and will feature a conversation with Dr. Christie Drew, Branch Chief, Program Analysis Branch, National Institute of Environmental Health Sciences, National Institutes of Health.

To register, please visit the [website](#).



(NEW) The 2021 Tribal Public Health Summit will take place from **April 27-29, 2021**. The Summit's theme "Indigenous Resilience in Tribal Public Health Practice" is a testament to the leadership and innovation coming out of Indian Country during the COVID-19 public health emergency.

TPHS breakout sessions stem from five tracks: Politics of Public Health and COVID-19, Behavioral and Spiritual Health, Strengthening Tribal Public Health Policy and Infrastructure, Climate Change and Environmental Health, and Native Youth Leadership. Plenary sessions virtually feature nationally recognized guest speakers, esteemed subject matter experts, and elected or appointed governmental officials. NIHB is also offering space for federal consultation sessions and listening sessions, which are free to the public.

To register, please visit the [website](#).

Re-imagining Prevention Science During Unprecedented Times

.....



2021 VIRTUAL
MEETING
APRIL 27-29, 2021

PRC
PREVENTION
RESEARCH CENTERS

(NEW) The PRC Program (CDC) is pleased to invite you to the 2021 Prevention Research Centers (PRC) Virtual Meeting: Re-imagining Prevention Science During Unprecedented Times. The meeting will be held from **April 27-29, 2021** from 12 PM until 4 PM CT each day via Zoom. During the meeting, participants will have the opportunity to:

- Understand key components of successful dissemination and translation of research findings.
- Discuss models, approaches, and best practices for engaging community members in all stages of the research process.
- Collaborate and network with PRCs, community boards, local and state health departments, PRCs evaluating other CDC-funded projects, and external policy and funding partners.
- Understand the role PRCs have played in the COVID-19 pandemic response.
- Learn and share best practices and collaborate across core PRC research and SIP projects.

The agenda is packed with exciting plenaries and engaging sessions, with topics ranging from collaborating with your communities, exploring the impact of COVID-19 on prevention research, and understanding updates to the Program Evaluation and Reporting System (PERS).

To register, please visit the [website](#).

University of Massachusetts Boston – Dana-Farber/Harvard Cancer Center
Partnership to Advance Cancer Health Equity

Challenges and Innovations in Diversifying the Scientific Workforce

(NEW) The University of Massachusetts Boston - Dana Farber/Harvard Cancer Center Partnership to Advance Cancer Health Equity will host its 2021 Scientific Workforce Symposium virtually on **May 7, 2021 from 2:00 - 4:00 pm ET**. The conference will discuss "Innovative approaches to address persistent challenges on diversifying the biomedical workforce in academia, industry and government."

To attend, please view this [flyer](#).

SAVE THE DATE!



MMC/ VICC/ TSU
Partners in Eliminating Cancer Health Disparities
20th Annual Scientific Symposium



(NEW) The Meharry-Vanderbilt-Tennessee State Cancer Partnership will host its 20th Annual MVTCP Scientific Symposium virtually on **May 22, 2021 from 8:30 am - 12:30 pm ET**. The conference theme is "COVID-19 and Cancer" and registration is free.

To attend, please view this [flyer](#).



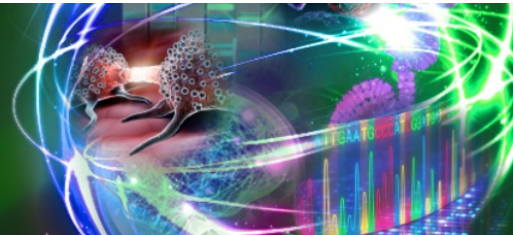
IHA's 2021 Conference: The Role of Health Literacy Through Perilous Times

(NEW) The Institute for Healthcare Advancement (IHA) will host the 20th Annual Virtual Health Literacy Conference from **May 25-27, 2021**. The conference goal is to discuss how to use our collective expertise and the agencies in which we work to better serve our communities and start the healing process.

To register, please visit the [website](#).

AACR ANNUAL MEETING 2021

Virtual Meeting
Week 1: April 10-15; Week 2: May 17-21



The second half of the AACR Annual Meeting 2021 will take place virtually from **May 17-21, 2021**. The first week will feature the opening ceremony, plenary sessions, major scientific sessions, and award lectures. The second week will feature education sessions, methods workshops, meet the expert sessions, and professional advancement sessions.

To register, please visit the [website](#).



(NEW) In many countries around the world, patients under age 50 are fighting, some dying, of colon and rectal cancers/bowel cancers. This phenomenon, called Early-Age Onset Colorectal Cancer (EAO CRC) or Early Onset CRC (EOCRC), is an urgent issue in cancer research and patient care around the globe. We all want to know why this is happening, fully aware that for some, time is running out.

Don't miss the 2021 Rally on Research: Early-Age Onset Colorectal Cancer, which will take place virtually from **June 24-25, 2021**. Inspired by Dr. Jose Perea in Madrid, Spain, come be part of bridging the science and finding your place on the international path to a cure.

Abstract Submission Deadline: April 30, 2021

To register, please visit the [website](#).



International Cancer Education Conference

*Integrating Culture, Spirituality, and
Social Support into Cancer Education
to Improve Health Equity*

October 2021 • Online @ 2021.attendicec.org

Make plans to attend the 2021 International Cancer Education Conference (ICEC), to be held virtually in October! The 2021 ICEC is co-organized by the American Association for Cancer Education (AACE), the Cancer Patient Education Network (CPEN) and the European Association for Cancer Education (EACE).

The 2021 conference plans to draw in more than 250 educators, physicians, nurses, public health professionals, researchers, students and social workers from around the world. Continuing Education credits will be provided for physicians, nurses, CHES professionals, and social workers. Dates and details will be coming soon as the program develops.

Workshop Abstract Submission Deadline: April 26, 2021

Oral/Poster/Symposium Abstract Submission Deadline: May 10, 2021

For more information, click [here](#).

[Black History Month Spotlight on CURE Scholar Dr. Tiffany Carson: Looking Back and Paying It Forward - Advancing the Science, the Landscape and the System](#)

[CURE Scholar Dr. Jelani Zarif on a Time to Celebrate African Americans' Contributions and Reflect on Past Plights](#)

[Black History Month Spotlight: Inspired by Hidden Figures, CURE Scholar Dr. Charles Rogers Embraces an Obligation to be Great](#)

[NCI statement on ending structural racism in biomedical research](#)

**Request for Information (RFI): Inviting Comments and Suggestions to Advance and Strengthen Racial Equity, Diversity, and Inclusion in Biomedical Research and Advance Health Disparities and Health Equity Research* (Comments must be received by April 23, 2021)

[President's Cancer Panel - Improving Resilience and Equity in Cancer Screening: Innovation to Increase Screening](#)

[V Foundation Awards Two Huntsman Cancer Institute Researchers](#)

[Through the Window and into the Mirror: Narratives of African American STEM Professionals](#)

TRAINING OPPORTUNITIES



Are you an early stage researcher ready to write a new or revised NIH-style proposal and interested in receiving coaching support while you write? If so, we invite you to apply for participation in the University of Utah Grant Writing Coaching Research Study, funded by the NIH Common Fund (grant U01 GM132366; administered by the NIGMS). This study will take place from August to December 2021 and will engage participants in a writing-intensive, small group, coaching experience designed to refine their proposal writing skills and facilitate timely submission of their proposals, led by an experienced grant writing coach (senior investigator)

Applications due by Apr. 16, 2021.

To apply, please visit the [website](#).



Moffitt Cancer Center Post-Doctoral Training in Behavioral Oncology

The H. Lee Moffitt Cancer Center & Research Institute, an NCI-designated Comprehensive Cancer Center, invites applications to its post-doctoral training program in behavioral oncology. This NCI-supported T32 interdisciplinary training program is designed to prepare fellows for careers as independent investigators engaged in research on behavioral aspects of cancer prevention, detection and control. We are particularly interested in candidates with an interest in nicotine dependence and

tobacco control, cervical cancer prevention, cultural and literacy issues in cancer prevention and control, disparities in cancer care, quality of life and symptom management issues in cancer survivors, psychosocial and behavioral aspects of familial and hereditary cancer, and health care provider practices in cancer prevention and control.

The application deadline is Jun. 30, 2021 or until all positions are filled.

To apply, please see the [flyer](#).

EMPLOYMENT OPPORTUNITIES

(NEW) [Assistant Professor](#), Department of Health Promotion and Community Health Sciences, Texas A&M University

(NEW) [Research Assistant](#), Division of Cancer Epidemiology and Genetics, National Cancer Institute

(NEW) [Research Assistant \(Contractor\)](#), Division of Cancer Epidemiology and Genetics, National Cancer Institute

(NEW) [Postdoctoral Fellowship \(Occupational & Environmental Epidemiology\)](#), Division of Cancer Epidemiology and Genetics, National Cancer Institute

(NEW) [Postdoctoral Fellowship \(Integrative Tumor Epidemiology\)](#), Division of Cancer Epidemiology and Genetics, National Cancer Institute

(NEW) [Postdoctoral Fellowship \(Infections and Immunoepidemiology\)](#), Division of Cancer Epidemiology and Genetics, National Cancer Institute

(NEW) [Postdoctoral Fellowship \(Laboratory of Translational Genomics\)](#), Division of Cancer Epidemiology and Genetics, National Cancer Institute

(NEW) [Postdoctoral Fellowship \(Biostatistics\)](#), Division of Cancer Epidemiology and Genetics, National Cancer Institute

(NEW) [Predoctoral/Postdoctoral Fellowship \(Metabolic Epidemiology\)](#), Division of Cancer Epidemiology and Genetics, National Cancer Institute

(NEW) [Post-Baccalaureate Fellowship \(Biostatistics\)](#), Division of Cancer Epidemiology and Genetics, National Cancer Institute

(NEW) [Post-Baccalaureate Fellowship \(Computational Pathology\)](#), Division of Cancer Epidemiology and Genetics, National Cancer Institute

[Cancer Immunology Postdoctoral Fellow](#), Department of Immunology, Moffitt Cancer Center

[Postdoctoral Fellow](#), Division of Public Health Sciences, Washington University of School of Medicine in St. Louis, Siteman Cancer Center

[Postdoctoral Fellow](#), Cancer Epigenetics Program, University of Miami Health System - Sylvester Comprehensive Cancer Center

[Coordinator of Biospecimen Operations](#), Division of Cancer Epidemiology and Genetics (DCEG), National Cancer Institute (NCI)

[Chief Officer for Scientific Workforce Diversity](#), National Institutes of Health (NIH)

[Post-Doctoral Fellow](#), Virginia Commonwealth University, Virginia Commonwealth University Massey Cancer Center

[Cancer Epidemiologist](#), University of Iowa College of Public Health, Holden Comprehensive Cancer Center

[Assistant/Associate Professors](#), Blavatnik Institute/Life Sciences, Harvard Medical School

[C-TIDE Post-Doctoral Fellow](#), University of Miami Miller School of Medicine, Sylvester Comprehensive Cancer Center

[Computational Scientist I](#), Cancer Genomics Research Laboratory (CGR), National Cancer Institute

[Post-Doctoral Fellow](#), Division of Health Equities, Beckman Research Institute, City of Hope Medical Center

[Faculty Member](#), Department of Health Behavior and Policy, Virginia Commonwealth University

[Faculty Member](#), Department of Health Outcomes & Behavior, H. Lee Moffitt Cancer Center & Research Institute

[Health Economist](#), Healthcare Assessment Research Branch, National Cancer Institute

[Medical Officer](#), Health Systems and Interventions Research Branch, National Cancer Institute

[USAJOBS - Various Positions](#), Varying locations, Domestic & International

FUNDING OPPORTUNITIES

(NEW) [Support for Research Excellence \(SuRE\) Award](#) | Applications are due April 26, 2021

(NEW) [Notice of Special Interest \(NOSI\): Administrative Supplements for Rapid Acceleration of Diagnostics-Underserved Populations \(RADx-UP\) Phase I Projects to Address Vaccine Hesitancy and Uptake](#) | Applications are due May 10, 2021

(NEW) [Notice of Special Interest \(NOSI\): Emergency Competitive Revisions for Community-engaged COVID-19 Testing Interventions among Underserved and Vulnerable Populations – RADx-UP Phase II \(Emergency Supplement - Clinical Trial Optional\)](#) | Applications are due May 24, 2021

(NEW) [Transformative Research to Address Health Disparities and Advance Health Equity \(U01 Clinical Trial Allowed\)](#) | Applications are due May 28, 2021

(NEW) [Transformative Research to Address Health Disparities and Advance Health Equity at Minority Serving Institutions \(U01 Clinical Trial Allowed\)](#) | Applications are due May 28, 2021

(NEW) [Emergency Award: Community-engaged COVID-19 Testing Interventions among Underserved and Vulnerable Populations – RADx-UP Phase II \(U01 Clinical Trial Optional\)](#) | Applications are due July 7, 2021

(NEW) [Emergency Award: RADx-UP - Social, Ethical, and Behavioral Implications \(SEBI\) Research on Disparities in COVID-19 Testing among Underserved and Vulnerable Populations \(U01 Clinical Trials Optional\)](#) | Applications are due July 7, 2021

(NEW) [Notice of Intent to Publish a Research Opportunity Announcement for RADx-UP Return to School Diagnostic Testing Approaches \(OT2 Clinical Trial Optional\)](#) | Applications deadline TBD

[Advancing Health Literacy to Enhance Equitable Community Responses to COVID-19](#) | Applications are due April 20, 2021

[The RADx-UP CDCC Community Collaboration Mini-Grant Program](#) | Applications are due May 14th, 2021; August 13th, 2021; November 12th, 2021

[Funding Opportunity Announcement: Social and Behavioral Intervention Research to Address Modifiable Risk Factors for Cancer in Rural Populations \(R01 Clinical Trial Required\)](#) | Applications are due January 18, 2022

[Funding Opportunity Announcement: Health Services Research on Minority Health and Health Disparities \(R01- Clinical Trial Optional\)](#) | Applications are due November 17, 2021; March 17, 2022; November 17 2022; February 17, 2023

[Funding Opportunity Announcement: Tobacco Control Policies to Promote Health Equity \(R01 Clinical Trial Optional\)](#) | Earliest Submission Date - November 12, 2020

F99/K00: The NCI Predoc to Postdoc Transition Award Funding Opportunity Announcement (FOA) to be issued in November



The NCI Predoctoral to Postdoctoral Fellow Transition (F99/K00) Award supports outstanding Ph.D. and other Research Doctoral candidates complete their dissertation research training (F99 phase) and transition in a timely manner to mentored, cancer-focused postdoctoral career development research positions (K00 phase).

For more information please click [here](#).

[2021 SBIR Contract Solicitation](#) | Application dates vary ([Apply to the Expert SBIR/STTR Application Assistance Program!](#))

[Faculty Institutional Recruitment for Sustainable Transformation \(FIRST\)](#) | Application dates vary

- [RFA-RM-20-022: NIH Faculty Institutional Recruitment for Sustainable Transformation \(FIRST\) Program: FIRST Cohort \(U54 Clinical Trial Optional\)](#)
- [RFA-RM-20-023: NIH Faculty Institutional Recruitment for Sustainable](#)

[Transformation \(FIRST\) Program: FIRST Coordination and Evaluation Center \(U24 Clinical Trial Not Allowed\)](#)

- [Press Release: NIH to fund cohort recruitment and development program to enhance diversity and inclusion among biomedical faculty](#)

[Funding Opportunity Announcement: Research Supplements to Promote Diversity in Health-Related Research \(Admin Supp - Clinical Trial Not Allowed\)](#) | Application dates vary

[Funding Opportunity Announcement: Mechanisms and Consequences of Sleep Disparities in the U.S. \(R01 - Clinical Trial Not Allowed\)](#)

| Applications are due July 14, 2021; July 14, 2022

[Funding Opportunity Announcement: Research to Reduce Morbidity and Improve Care for Pediatric, and Adolescent and Young Adult \(AYA\) Cancer Survivors \(R01 and R21 - Clinical Trial Optional\)](#) | First available

due date - June 30, 2020



National Institute
on Minority Health
and Health Disparities

NIMHD

NIMHD Exploratory/Developmental Research Grant Program (R21 - Clinical Trial Optional)

NIMHD invites applications to support short-term exploratory or developmental research projects that have the potential to break new ground in the fields of minority health and/or health disparities or extend previous discoveries toward new directions or applications that can directly contribute to improving minority health and/or reducing health disparities in the U.S.

For more information please visit the [website](#).

[Research Career Development Awards \(K-Series\)](#) - National Institutes of Health (NIH). **Application deadlines vary**

[NIH Loan Repayment Programs \(LRPs\)](#). **Application deadlines vary**

Social Epigenomics Research Focused on Minority Health and Health Disparities (R01- Clinical Trial Not Allowed) | Applications are due November 8, 2021 | [PAR-19-372](#)

NCI Mechanisms of Disparities in Etiology and Outcomes of Lung Cancer in the US: The Role of Risk and Protective Factors (NEW) (R01 Clinical Trial Not Allowed) | Applications are due March 4, 2021 | [PAR-19-018](#)

NCI Mechanisms of Disparities in Etiology and Outcomes of Lung Cancer in the US: The Role of Risk and Protective Factors (NEW) (R21 Clinical Trial Not Allowed) | Applications are due March 4, 2021 | [PAR-19-019](#)

Looking for additional [funding opportunities](#)? A full list of CRCHD funding opportunities as well as select NIH opportunities is available online.

NCI's Research Interests to Improve Interprofessional Teamwork and Coordination During Cancer Diagnosis

and Treatment

This [NOSI](#) highlights the Healthcare Delivery Research Program's interest in receiving investigator-initiated grant applications focused on understanding and improving interprofessional teamwork and coordination during cancer diagnosis and treatment.

Research encouraged through this NOSI includes, but is not limited to, studies that

- Identify modifiable features of **care team structure** (e.g., care team composition or organization), associated with differences in cancer care quality and patient outcomes.
- Identify modifiable features of **care team processes** (e.g., decision making, communication, coordination behaviors, collaboration, leadership) associated with differences in cancer care quality and patient outcomes.
- Identify **characteristics at the patient, caregiver, care team, delivery organization, health system, and/or community levels** that influence the functioning and effectiveness of interprofessional cancer care teams.
- Develop and test interventions designed to improve cancer care quality and patient outcomes by **modifying the structure and/or functioning** of interprofessional teams.
- Develop and test interventions designed to improve cancer care quality and patient outcomes by **engaging patients and caregivers** as members of their cancer care team.

Application and Submission Information

This NOSI applies to due dates on or after **September 25, 2019 through January 8, 2022**. Applications related to this NOSI may be submitted using the following funding opportunity announcements or future reissuances:

- [PAR-18-869](#) Modular R01s in Cancer Control and Population Sciences (R01 Clinical Trial Optional)
- [PAR-18-559](#) Cancer Prevention and Control Clinical Trials Grant Program (R01 Clinical Trial Required)
- [PA-19-056](#) NIH Research Project Grant (Parent R01 Clinical Trial Not Allowed)

BEST PRACTICES & RESOURCES



Physical Sciences-Oncology Network — Bioresource Core Facility

The Physical Sciences-Oncology Network Bioresource Core Facility (PBCF) at ATCC is an NCI-funded resource for all members of the Physical Sciences-Oncology Network (PS-ON), Cancer Systems Biology Consortium (CSBC), and all NIH-funded cancer researchers. The PBCF serves as a centralized distributor and repository providing common stocks of an authenticated set of non-malignant and cancerous cell lines, cell culture reagents, and related standard operating protocols. Datasets of published work using the PBCF cell lines are requested to be reported to the PBCF and the NCI.

For more information, please visit the [website](#).



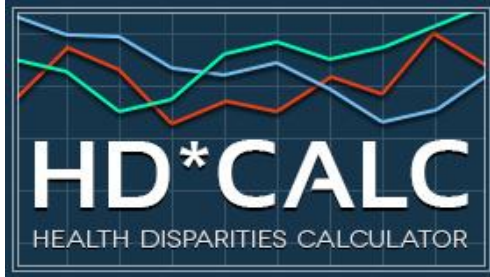
Join NRMN Today!

Our resources include mentor certification, professional development webinars, a social networking platform called MyNRMN, and facilitator certification through the Center for the Improvement of Mentored Experiences in Research (CIMER)

For more information, please view the [flyer](#).

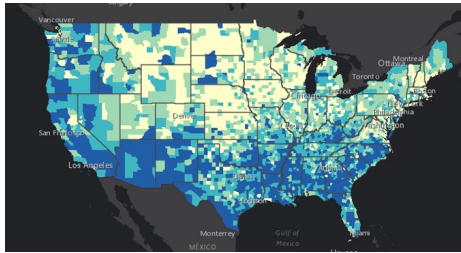
Health Disparities Calculator 2.0

The Health Disparities Calculator (HD*Calc) is statistical software designed to generate multiple summary measures to evaluate and monitor health disparities (HD). HD*Calc was created as an extension



of SEER*Stat that allows the user to import SEER data or other population-based health data, such as National Health Survey sample data from the National Health Interview Survey (NHIS) or the Behavioral Risk Factor Surveillance System (BRFSS), and calculate any of eleven disparity measures.

To download the new Health Disparities Calculator 2.0, please visit the following [website](#).



Centers for Disease Control and Prevention Social Vulnerability Index

Social vulnerability refers to the resilience of communities when confronted by external stresses on human health, stresses such as natural or human-caused disasters, or disease outbreaks. Reducing social vulnerability can decrease both human suffering and economic loss. CDC's Social Vulnerability Index uses 15 U.S. census variables at tract level to help local officials identify communities that may need support in preparing for hazards; or recovering from disaster.

The Geospatial Research, Analysis, and Services Program (GRASP) created and maintains CDC's Social Vulnerability Index. For more information visit [here](#).

- **(NEW)** [AACR Annual Report 2020](#)
- [Culturally and Linguistically Appropriate Services \(CLAS\) in Maternal Health Care](#)
- [Culturally and Linguistically Appropriate Services \(CLAS\) in Maternal Health Care](#)
- [Healthcare Delivery Research Program \(HDRP\) Sample Grant Applications](#)
- [Building Diverse Mentoring Networks that Transcend Boundaries in Cancer Research](#)
- [Mil Gracias \(A Thousands Thanks\) for Not Smoking Indoors!](#)
- [American Cancer Society Facts and Figures 2021](#)
- [Similarities in Risk for COVID-19 and Cancer Disparities](#)
- [Scholarships for Latino Students](#)
- [PhenX Social Determinants of Health Assessments Collection](#)
- [The Diversity–Innovation Paradox in Science](#)
- [Differences in Stage of Cancer at Diagnosis, Treatment, and Survival by Race and Ethnicity Among Leading Cancer Types](#)
- [2020 AACR Annual Report](#)
- [AACR Cancer Progress Report 2020](#)
- [AACR Cancer Disparities Progress Report 2020](#)
- [Cancer Health Disparities | Did You Know? - NCI](#)
- [Promoting Yourself, Your Research and the New NIH Biosketch](#)
- [NIH Biosketch - What is new in the New Biosketch?](#)
- NIH Tips on [Writing Your Grant Application](#)
- Find Funded NIH Projects - [NIH Reporter](#)

- [Cancer Health Disparities Definitions](#) - NCI
- [Public Health Employment Connection](#) - Updated Job Opportunities Nationwide
- [Jobs @ NIH](#) - Explore jobs and training opportunities
- [Colorado Health Literacy Coalition](#)
- [Communicate Health](#)
- [Health Literacy Media](#)
- [Health Literacy Research Conference](#)
- [Institute of Healthcare Advancement \(IHA\)](#)
- [National Academy of Sciences: Roundtable on Health Literacy](#)
- [Wisconsin Health Literacy](#)

Connect with your GMaP Partners

UAB at Birmingham
 University of Arkansas - MS
 Moffitt Cancer Center
 University of Miami
 Bethune Cookman University
 Emory University
 Florida A & M University
 Morehouse School of Medicine
 Xavier University of Louisiana
 Louisiana State University
 Tulane University
 University of Florida
 University of Mississippi
 Washington University in St. Louis
 Ponce Health Sciences University

[Tiffany Carson](#)
[Michael Preston](#)
[Cathy Meade](#)
[Cynthia Thiry](#)
[Deanna Wathington](#)
[Theresa Gillespie](#)
[Renee Reams](#)
[Brian Rivers](#)
[Margarita Echeverri](#)
[Lucio Miele](#)
[Asim Abdel Mageed](#)
[Diana Wilkie](#)
[Roy Duhé](#)
[Aimee James](#)
[Idhaliz Flores](#)

Cancer Training at NCI

STAY CONNECTED

Become a GMaP Partner and stay connected. Let us know what information you want to know, how can we better help, or if you're interested in collaboration. Do you want us to highlight your programs? Join [GMaP Region 2](#) today and let us know what information you want us to feature in our next newsletter!



GMaP Region 2 | 813-745-8726 | GMap.Region2@moffitt.org | [Website](#)

**You are receiving this email as a Cancer
Researcher in GMaP Region 2**