

Geographic Management of Cancer Health Disparities Program (GMAP) Region 2 *March 2021 E-Blast*

GMAP is an integrated network of 7 regions across the United States. Moffitt Cancer Center in Tampa, FL serves as the hub for GMAP Region 2 which currently includes more than 40 partner institutions in Alabama, Arkansas, Florida, Georgia, Louisiana, Missouri, Mississippi and Puerto Rico.

***You are receiving this email as a Cancer
Researcher in GMAP Region 2***

Connect with GMAP Region 2 on Social Media!



Click to Visit our GMAP Region 2 Website

The Travel Award is intended to support career development related to cancer research or cancer health disparities research. This scholarship will provide reimbursement (e.g. registration, airfare,

Travel Awards APPLY NOW!



hotel, etc.) for ESI's or Trainees to present research at conferences and attend skills workshops/trainings. Applicants must be located in a GMaP Region 2 state/territory, be a trainee or Early Stage Investigator (ESI), and submit a complete application.

To learn more or apply, click [here!](#)



APPLY TO THE GMAP REGION 2 REGISTRATION SUPPORT SCHOLARSHIP TODAY!

The Registration Support Scholarship is intended to support underrepresented scholars and investigators in cancer research or cancer health disparities research by providing reimbursement for registration fees associated with virtual or in-person meetings, conferences, workshops or training.

To learn more or apply, click [here!](#)

NEWS - EVENTS - CONFERENCES



GMaP Region 5 Virtual Tour Webinar Series

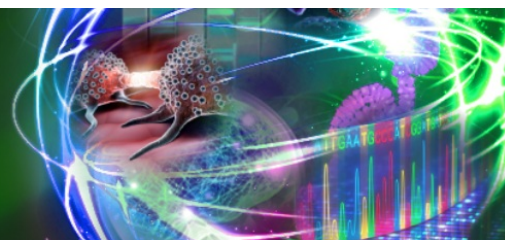
March 31, 2021 2-3 pm PST

(NEW) The GMaP Region 5 Virtual Tour Webinar Series will begin on **Wednesday, March 31st, 2021 from 11:00 am - 12:00 pm EST** featuring Drs. Hala Madanat and Elena Martinez. They will discuss the SDSU/UCSD Cancer Partnership and its role in advancing cancer health equity through excellence in cancer research, cancer education, and community engagement in San Diego and Imperial Counties.

To register, click [here](#).

AACR ANNUAL MEETING 2021

Virtual Meeting
Week 1: April 10-15; Week 2: May 17-21



The AACR Annual Meeting 2021 will take place virtually from **April 10-15, 2021** and from **May 17-21, 2021**. The first week will feature the opening ceremony, plenary sessions, major scientific sessions, and award lectures. The second week will feature education sessions, methods workshops, meet the expert sessions, and professional advancement sessions.

To register, please visit the [website](#).

*****SPECIAL OPPORTUNITY*****

NCI Leadership will be virtually visiting the presentations and/or abstracts of GMaP trainees during the meeting. Let us know if you are presenting or first author using [this link](#) by March 19th, 2021!



International Cancer Education Conference

*Integrating Culture, Spirituality, and Social Support
into Cancer Education to Improve Health Equity*

6-8 October 2021 • Toronto, Ontario, Canada



(NEW) The 2021 International Cancer Education Conference will be held **Wednesday, October 6th - Friday, October 8th, 2021** in Toronto, Ontario, Canada. The theme of this year's conference is Integrating Culture, Spirituality, and Social Support into Cancer Education to Improve Health Equity. The 2021 conference plans to draw in more than 250 educators, physicians, nurses, public health professionals, researchers, students and social workers from around the world. Continuing Education credits will be provided for physicians, nurses, CHES professionals, and social workers.

Workshop Abstract Submission Deadline: April 12, 2021

Oral/Poster/Symposium Abstract Submission Deadline: April 26, 2021

For more information, click [here](#).

(NEW) [Black History Month Spotlight on CURE Scholar Dr. Tiffany Carson: Looking Back and Paying It Forward - Advancing the Science, the Landscape and the System](#)

(NEW) [CURE Scholar Dr. Jelani Zarif on a Time to Celebrate African Americans' Contributions and Reflect on Past Plights](#)

(NEW) [Black History Month Spotlight: Inspired by Hidden Figures, CURE Scholar Dr. Charles Rogers Embraces an Obligation to be Great](#)

(NEW) [NCI statement on ending structural racism in biomedical research](#)

**Request for Information (RFI): Inviting Comments and Suggestions to Advance and Strengthen Racial Equity, Diversity, and Inclusion in Biomedical Research and Advance Health Disparities and Health Equity Research* (Comments must be received by April 9, 2021)

[President's Cancer Panel - Improving Resilience and Equity in Cancer Screening: Innovation to Increase Screening](#)

[V Foundation Awards Two Huntsman Cancer Institute Researchers](#)

[Through the Window and into the Mirror: Narratives of African American STEM Professionals](#)

TRAINING OPPORTUNITIES



(NEW) The AACR and ASCO are pleased to continue the Methods in Clinical Cancer Research Workshop (July 26 - 29, 2021) as a virtual event to provide an intensive program covering all aspects of clinical trial design for fellows and junior faculty-level investigators. The highly competitive program not only provides essential education in clinical trial design, but also builds collaborations and peer networks that many participants maintain throughout their careers.

Applications due by Apr. 2, 2021.

To apply, please visit the [website](#).



NRMN
Mentoring to Diversify the
Biomedical Workforce



(NEW) Are you an early stage researcher ready to write a new or revised NIH-style proposal and interested in receiving coaching support while you write? If so, we invite you to apply for participation in the University of Utah Grant Writing Coaching Research Study, funded by the NIH Common Fund (grant U01 GM132366; administered by the NIGMS). This study will take place from August to December 2021 and will engage participants in a writing-intensive, small group, coaching experience designed to refine their proposal writing skills and facilitate timely submission of their proposals, led by an experienced grant writing coach (senior investigator)

Applications due by Apr. 16, 2021.

To apply, please visit the [website](#).

APPLY TODAY

TOGETHER, EQUITABLE, ACCESSIBLE, MEANINGFUL
CANCER CARE FOR SEXUAL AND GENDER MINORITY PATIENTS

TEAM SGM TRAINING

A VIRTUAL TECHNICAL ASSISTANCE PROGRAM

APPLICATIONS DUE APRIL 1, 2021

GW Cancer Center

(NEW) The George Washington University (GW) Cancer Center is pleased to announce that applications are now open for the third cohort of the Together, Equitable, Accessible, Meaningful (TEAM) Cancer Care for Sexual and Gender Minority (SGM) Patients Training. The TEAM SGM Training aims to support equitable, accessible, and patient-centered cancer care for LGBTQI patients. The training will provide guidance, tools, and resources to help organizations implement quality improvements to improve equitable, patient-centered, culturally affirming care.

Applications due by Apr. 1, 2021.

To apply, please visit the [website](#).

MOFFITT
CANCER CENTER

**Moffitt Cancer Center Post-Doctoral
Training
in Behavioral Oncology**

The H. Lee Moffitt Cancer Center & Research Institute, an NCI-designated Comprehensive Cancer Center, invites

applications to its post-doctoral training program in behavioral oncology. This NCI-supported T32 interdisciplinary training program is designed to prepare fellows for careers as independent investigators engaged in research on behavioral aspects of cancer prevention, detection and control. We are particularly interested in candidates with an interest in nicotine dependence and tobacco control, cervical cancer prevention, cultural and literacy issues in cancer prevention and control, disparities in cancer care, quality of life and symptom management issues in cancer survivors, psychosocial and behavioral aspects of familial and hereditary cancer, and health care provider practices in cancer prevention and control.

The application deadline is Jun. 30, 2021 or until all positions are filled.

To apply, please see the [flyer](#).

EMPLOYMENT OPPORTUNITIES

[Cancer Immunology Postdoctoral Fellow](#), Department of Immunology, Moffitt Cancer Center

[Postdoctoral Fellow](#), Division of Public Health Sciences, Washington University of School of Medicine in St. Louis, Siteman Cancer Center

[Postdoctoral Fellow](#), Cancer Epigenetics Program, University of Miami Health System - Sylvester Comprehensive Cancer Center

[Coordinator of Biospecimen Operations](#), Division of Cancer Epidemiology and Genetics (DCEG), National Cancer Institute (NCI)

[Chief Officer for Scientific Workforce Diversity](#), National Institutes of Health (NIH)

[Post-Doctoral Fellow](#), Virginia Commonwealth University, Virginia Commonwealth University Massey Cancer Center

[Cancer Epidemiologist](#), University of Iowa College of Public Health, Holden Comprehensive Cancer Center

[Assistant/Associate Professors](#), Blavatnik Institute/Life Sciences, Harvard Medical School

[C-TIDE Post-Doctoral Fellow](#), University of Miami Miller School of Medicine, Sylvester Comprehensive Cancer Center

[Computational Scientist I](#), Cancer Genomics Research Laboratory (CGR), National Cancer Institute

[Post-Doctoral Fellow](#), Division of Health Equities, Beckman Research Institute, City of Hope Medical Center

[Faculty Member](#), Department of Health Behavior and Policy, Virginia Commonwealth University

[Faculty Member](#), Department of Health Outcomes & Behavior, H. Lee Moffitt Cancer Center & Research Institute

[Health Economist](#), Healthcare Assessment Research Branch, National Cancer Institute

[Medical Officer](#), Health Systems and Interventions Research Branch, National Cancer Institute

FUNDING OPPORTUNITIES

OMH to invest \$250M in new initiative to encourage COVID-19 safety and vaccination in underserved populations.



(NEW) [Advancing Health Literacy to Enhance Equitable Community Responses to COVID-19](#)

| Applications are due April 20, 2021

- A technical assistance webinar for interested applicants will be held on **Wednesday, March 17 at 5:00 PM EST**. Click [here](#) to register for the webinar.

(NEW) [The RADx-UP CDCC Community Collaboration Mini-Grant Program](#)

| Applications are due April 16th, 2021; May 14th, 2021; August 13th, 2021; November 12th, 2021

- To learn more about the Mini-Grant Program during a 1- hour informational webinar on **Tuesday, March 16, 2021 at 4:00 PM EST**, register [here](#).

[Notice of Special Interest \(NOSI\): Administrative Supplement Opportunity to Study the Impact of COVID-19 on Global Cancer Prevention and Control](#) | Applications are due March 31, 2021

- CGH will be hosting a webinar to address frequently asked questions about this funding opportunity on **Thursday, February 25, 2021 at 9:00 a.m. EST**. Click [here](#) to join the webinar, or copy and paste the following link into your browser <https://nih.zoomgov.com/j/1615455986?pwd=S2NlclFKNXILWGs0bHV1aDlDa1BQZz09>.

[Funding Opportunity Announcement: Social and Behavioral Intervention Research to Address Modifiable Risk Factors for Cancer in Rural Populations \(R01 Clinical Trial Required\)](#) | Applications are due January 18, 2022

[Funding Opportunity Announcement: Health Services Research on Minority Health and Health Disparities \(R01- Clinical Trial Optional\)](#)

| Applications are due March 17, 2021; November 17, 2021; March 17, 2022; November 17 2022; February 17, 2023

[Funding Opportunity Announcement: Tobacco Control Policies to Promote Health Equity \(R01 Clinical Trial Optional\)](#) | Earliest Submission Date - November 12, 2020

F99/K00: The NCI Predoc to Postdoc Transition Award Funding Opportunity Announcement (FOA) to be issued in November



The NCI Predoctoral to Postdoctoral Fellow Transition (F99/K00) Award supports outstanding Ph.D. and other Research Doctoral candidates complete their dissertation research training (F99 phase) and transition in a timely manner to mentored, cancer-focused postdoctoral career development research positions (K00 phase).

For more information please click [here](#).

[2021 SBIR Contract Solicitation](#) | Application dates vary ([Apply to the Expert](#))

Faculty Institutional Recruitment for Sustainable Transformation (FIRST)

| Application dates vary

- [RFA-RM-20-022: NIH Faculty Institutional Recruitment for Sustainable Transformation \(FIRST\) Program: FIRST Cohort \(U54 Clinical Trial Optional\)](#)
- [RFA-RM-20-023: NIH Faculty Institutional Recruitment for Sustainable Transformation \(FIRST\) Program: FIRST Coordination and Evaluation Center \(U24 Clinical Trial Not Allowed\)](#)
- [Press Release: NIH to fund cohort recruitment and development program to enhance diversity and inclusion among biomedical faculty](#)

Funding Opportunity Announcement: Research Supplements to Promote Diversity in Health-Related Research (Admin Supp - Clinical Trial Not Allowed) | Application dates vary

Funding Opportunity Announcement: Mechanisms and Consequences of Sleep Disparities in the U.S. (R01 - Clinical Trial Not Allowed)

| Applications are due July 14, 2021; July 14, 2022

Funding Opportunity Announcement: Research to Reduce Morbidity and Improve Care for Pediatric, and Adolescent and Young Adult (AYA) Cancer Survivors (R01 and R21 - Clinical Trial Optional) | First available due date - June 30, 2020



National Institute
on Minority Health
and Health Disparities

NIMHD

NIMHD Exploratory/Developmental Research Grant Program (R21 - Clinical Trial Optional)

NIMHD invites applications to support short-term exploratory or developmental research projects that have the potential to break new ground in the fields of minority health and/or health disparities or extend previous discoveries toward new directions or applications that can directly contribute to improving minority health and/or reducing health disparities in the U.S.

For more information please visit the [website](#).

Research Career Development Awards (K-Series) - National Institutes of Health (NIH). **Application deadlines vary**

NIH Loan Repayment Programs (LRPs). **Application deadlines vary**

Social Epigenomics Research Focused on Minority Health and Health Disparities (R01- Clinical Trial Not Allowed) | Applications are due November 8, 2021 | [PAR-19-372](#)

NCI Mechanisms of Disparities in Etiology and Outcomes of Lung Cancer in the US: The Role of Risk and Protective Factors (NEW) (R01 Clinical Trial Not Allowed) | Applications are due March 4, 2021 | [PAR-19-018](#)

NCI Mechanisms of Disparities in Etiology and Outcomes of Lung Cancer in the US: The Role of Risk and Protective Factors (NEW) (R21 Clinical Trial Not Allowed) | Applications are due March 4, 2021 | [PAR-19-019](#)

Looking for additional [funding opportunities](#)? A full list of CRCHD funding opportunities as well as select NIH opportunities is available online.

NCI's Research Interests to Improve Interprofessional Teamwork and Coordination During Cancer Diagnosis and Treatment

This [NOSI](#) highlights the Healthcare Delivery Research Program's interest in receiving investigator-initiated grant applications focused on understanding and improving interprofessional teamwork and coordination during cancer diagnosis and treatment.

Research encouraged through this NOSI includes, but is not limited to, studies that

- Identify modifiable features of **care team structure** (e.g., care team composition or organization), associated with differences in cancer care quality and patient outcomes.
- Identify modifiable features of **care team processes** (e.g., decision making, communication, coordination behaviors, collaboration, leadership) associated with differences in cancer care quality and patient outcomes.
- Identify **characteristics at the patient, caregiver, care team, delivery organization, health system, and/or community levels** that influence the functioning and effectiveness of interprofessional cancer care teams.
- Develop and test interventions designed to improve cancer care quality and patient outcomes by **modifying the structure and/or functioning** of interprofessional teams.
- Develop and test interventions designed to improve cancer care quality and patient outcomes by **engaging patients and caregivers** as members of their cancer care team.

Application and Submission Information

This NOSI applies to due dates on or after **September 25, 2019 through January 8, 2022**. Applications related to this NOSI may be submitted using the following funding opportunity announcements or future reissuances:

- [PAR-18-869](#) Modular R01s in Cancer Control and Population Sciences (R01 Clinical Trial Optional)
- [PAR-18-559](#) Cancer Prevention and Control Clinical Trials Grant Program (R01 Clinical Trial Required)
- [PA-19-056](#) NIH Research Project Grant (Parent R01 Clinical Trial Not Allowed)

BEST PRACTICES & RESOURCES



Physical Sciences-Oncology Network
Bioresource Core Facility

The Physical Sciences-Oncology Network Bioresource Core Facility (PBCF) at ATCC is an NCI-funded resource for all members of the Physical Sciences-Oncology Network (PS-ON), Cancer Systems Biology Consortium (CSBC), and all NIH-funded cancer researchers. The PBCF serves as a centralized distributor and repository providing common stocks of an authenticated set of non-malignant and cancerous cell lines, cell culture reagents, and related standard operating protocols. Datasets of published work using the PBCF cell lines are requested to be reported to the PBCF and the NCI.

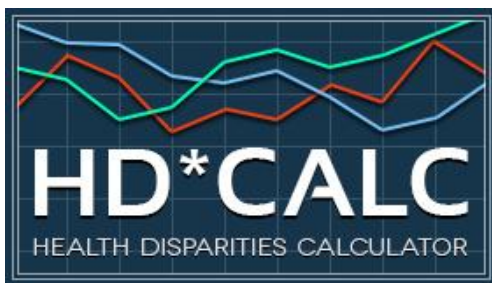
For more information, please visit the [website](#).



Join NRMN Today!

Our resources include mentor certification, professional development webinars, a social networking platform called MyNRMN, and facilitator certification through the Center for the Improvement of Mentored Experiences in Research (CIMER)

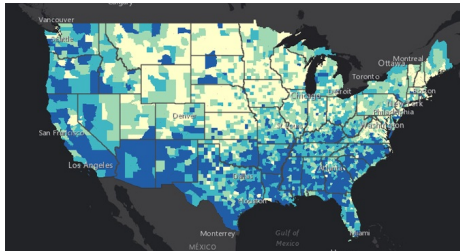
For more information, please view the [flyer](#).



Health Disparities Calculator 2.0

The Health Disparities Calculator (HD*Calc) is statistical software designed to generate multiple summary measures to evaluate and monitor health disparities (HD). HD*Calc was created as an extension of [SEER*Stat](#) that allows the user to import SEER data or other population-based health data, such as National Health Survey sample data from the National Health Interview Survey (NHIS) or the Behavioral Risk Factor Surveillance System (BRFSS), and calculate any of eleven disparity measures.

To download the new Health Disparities Calculator 2.0, please visit the following [website](#).



Centers for Disease Control and Prevention Social Vulnerability Index

Social vulnerability refers to the resilience of communities when confronted by external stresses on human health, stresses such as natural or human-caused disasters, or disease outbreaks. Reducing social vulnerability can decrease both human suffering and economic loss. CDC's Social Vulnerability Index uses 15 U.S. census variables at tract level to help local officials identify communities that may need support in preparing for hazards; or recovering from disaster.

The Geospatial Research, Analysis, and Services Program (GRASP) created and maintains CDC's Social Vulnerability Index. For more information visit [here](#).

- **(NEW)** [Culturally and Linguistically Appropriate Services \(CLAS\) in Maternal Health Care](#)
- [Healthcare Delivery Research Program \(HDRP\) Sample Grant Applications](#)
- [Building Diverse Mentoring Networks that Transcend Boundaries in Cancer Research](#)
- [Mil Gracias \(A Thousands Thanks\) for Not Smoking Indoors!](#)
- [American Cancer Society Facts and Figures 2021](#)
- [Similarities in Risk for COVID-19 and Cancer Disparities](#)
- [Scholarships for Latino Students](#)
- [PhenX Social Determinants of Health Assessments Collection](#)
- [The Diversity-Innovation Paradox in Science](#)
- [Differences in Stage of Cancer at Diagnosis, Treatment, and Survival by Race and Ethnicity Among Leading Cancer Types](#)
- [2020 AACR Annual Report](#)
- [AACR Cancer Progress Report 2020](#)
- [AACR Cancer Disparities Progress Report 2020](#)
- [Cancer Health Disparities | Did You Know? - NCI](#)
- [Promoting Yourself, Your Research and the New NIH Biosketch.](#)
- [NIH Biosketch](#) - What is new in the New Biosketch?
- NIH Tips on [Writing Your Grant Application](#)
- Find Funded NIH Projects - [NIH Reporter](#)
- [Cancer Health Disparities Definitions](#) - NCI
- [Public Health Employment Connection](#) - Updated Job Opportunities Nationwide

- [Jobs @ NIH](#) - Explore jobs and training opportunities
- [Colorado Health Literacy Coalition](#)
- [Communicate Health](#)
- [Health Literacy Media](#)
- [Health Literacy Research Conference](#)
- [Institute of Healthcare Advancement \(IHA\)](#)
- [National Academy of Sciences: Roundtable on Health Literacy](#)
- [Wisconsin Health Literacy](#)

Connect with your GMaP Partners

UAB at Birmingham
University of Arkansas - MS
Moffitt Cancer Center
University of Miami
Bethune Cookman University
Emory University
Florida A & M University
Morehouse School of Medicine
Xavier University of Louisiana
Louisiana State University
Tulane University
University of Florida
University of Mississippi
Washington University in St. Louis
Ponce Health Sciences University

[Tiffany Carson](#)
[Michael Preston](#)
[Cathy Meade](#)
[Cynthia Thiry](#)
[Deanna Wathington](#)
[Theresa Gillespie](#)
[Renee Reams](#)
[Brian Rivers](#)
[Margarita Echeverri](#)
[Lucio Miele](#)
[Asim Abdel Mageed](#)
[Diana Wilkie](#)
[Roy Duhé](#)
[Aimee James](#)
[Idhaliz Flores](#)

Cancer Training at NCI

STAY CONNECTED

Become a GMaP Partner and stay connected. Let us know what information you want to know, how can we better help, or if you're interested in collaboration. Do you want us to highlight your programs? Join [GMap Region 2](#) today and let us know what information you want us to feature in our next newsletter!



GMaP Region 2 | 813-745-8726 | GMap.Region2@moffitt.org | [Website](#)

**You are receiving this email as a Cancer
Researcher in GMaP Region 2**