

Geographic Management of Cancer Health Disparities Program (GMAP) Region 2 *January 2021 E-Blast*

GMAP is an integrated network of 7 regions across the United States. Moffitt Cancer Center in Tampa, FL serves as the hub for GMAP Region 2 which currently includes more than 40 partner institutions in Alabama, Arkansas, Florida, Georgia, Louisiana, Missouri, Mississippi and Puerto Rico.

***You are receiving this email as a Cancer
Researcher in GMAP Region 2***

Connect with GMAP Region 2 on Social Media!



Click to Visit our GMAP Region 2 Website

The Travel Award is intended to support career development related to cancer research or cancer health disparities research. This scholarship will provide reimbursement (e.g. registration, airfare,

Travel Awards APPLY NOW!



hotel, etc.) for ESI's or Trainees to present research at conferences and attend skills workshops/trainings. Applicants must be located in a GMaP Region 2 state/territory, be a trainee or Early Stage Investigator (ESI), and submit a complete application.

To learn more or apply, click [here!](#)



The Registration Support Scholarship is intended to support underrepresented scholars and investigators in cancer research or cancer health disparities research by providing reimbursement for registration fees associated with virtual or in-person meetings, conferences, workshops or training.

To learn more or apply, click [here!](#)

GMaP Region 2: Anti-Racism Resource Guide

Tragic events over the past few months have highlighted the pervasive issue of systemic and institutional racism in the United States. Black people in research and academia are not exempt from experiencing the pitfalls of racism in their personal and professional lives. GMaP Region 2 serves a diverse cadre of scholars including dynamic Black students, investigators, and faculty, many of whom likely have firsthand experiences with racism. While we will not solve the issue of systemic and institutional racism overnight, our collective actions have power. Below are links to thoughtfully selected anti-racism resources. Our hope is that these resources will 1) support difficult conversations, 2) cause you to think introspectively and listen actively, and 3) speak up and speak out against racism.

- [Black Study in a Time of Trouble: A Reading List](#)
- [TED Talks to help you understand racism in America](#)
- [A Detailed List of Anti-Racism Resources](#)

“Race and racism is a reality that so many of us grow up learning to just deal with. But if we ever hope to move past it, it can't just be on people of color to deal with it. It's up to all of us — Black, white, everyone — no matter how well-meaning we think we might be, to do the honest,

uncomfortable work of rooting it out.” – Michelle Obama

Additional Reading -

[The Cancer Letter:](#)

[Guest Editorials from Dr. Robert A. Winn & Dr. Otis W. Brawley](#)

GMAP Region 2 - COVID-19 Update

Dear GMAP Region 2: We hope you and your families are staying safe amidst the coronavirus (COVID-19) outbreak. As we monitor the situation, GMAP Region 2 will continue to send out news from the National Cancer Institute, conference updates, virtual meeting details, job opportunities, grant notices, etc. via multiple communication channels.

Although applications for GMAP Region 2 Travel Awards are closed until further notice, applications for [GMAP Region 2 Expert Grant Reviews](#) remain open. If you have information you would like to share with our network or additional questions or concerns, please contact us at gmap.region2@moffitt.org.

COVID-19 Related News & Resources:

**For a full list of news and resources, please visit our [website](#).*

NEWS - EVENTS - CONFERENCES



(NEW) The CTSA Visiting Scholar Program meeting entitled "Judging beyond the cover: Assessing the readability, understandability, and actionability in breast cancer survivorship print materials" will take place on **February 3, 2021 at 12:00 pm**. GMAP Region 2 Scholar, Dr. Pearman Parker is a NIH-funded institutional K Scholar at the University of Arkansas for Medical Sciences. She will present the results from her K project where she investigated the perceptions of cancer educational materials among young women breast cancer survivors. She will also discuss the results from an environmental scan of cancer educational materials for content and readability and present her next steps toward grant development and future collaborations.

To register, please visit the [website](#).

(NEW) The Tuskegee & Henrietta meeting will take place on **February 4, 2021 at 7:00 pm** and will recap the Tuskegee Syphilis study and the legacy of Henrietta Lacks in regards to African American participation in research in the early 1900's.

To register, please visit the [website](#).



AACR VIRTUAL MEETING: COVID-19 AND CANCER

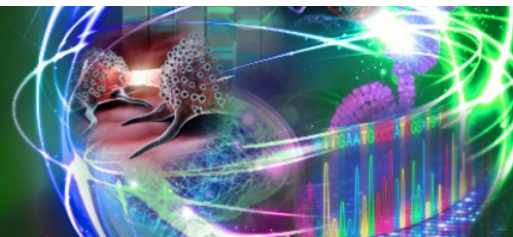
February 3 - 5, 2021
Virtual Meeting, Save the Dates

The AACR Virtual Meeting: COVID-19 and Cancer will take place from **February 3-5, 2021** and will explore the latest research into vaccines and treatment advances in the global fight against the pandemic, and its effects on cancer patients.

To register, please visit the [website](#).

AACR ANNUAL MEETING 2021

Virtual Meeting
Week 1: April 10-15; Week 2: May 17-21



(NEW) The AACR Annual Meeting 2021 will take place virtually from **April 10-15, 2021** and from **May 17-21, 2021**. The first week will feature the opening ceremony, plenary sessions, major scientific sessions, and award lectures. The second week will feature education sessions, methods workshops, meet the expert sessions, and professional advancement sessions.

To register, please visit the [website](#).



9TH ANNUAL SYMPOSIUM ON GLOBAL CANCER RESEARCH @ THE 2021 CONSORTIUM OF UNIVERSITIES FOR GLOBAL HEALTH ANNUAL CONFERENCE

The 9th Annual Symposium on Global Cancer Research will be held virtually **Wednesday, March 10th - Thursday, March 11th, 2021** as a satellite meeting to the 12th Annual Consortium of Universities for Global Health (CUGH) Global Health Conference. The Symposium theme for 2021 is Global Cancer Research and Control: Looking Back and Charting a Path Forward. The Symposium aims to convene individuals working in global oncology in a working meeting environment to discuss trends in global cancer research and control, and to map out collaborative efforts to move the field forward.

Registration for the 9th Annual Symposium on Global Cancer Research will open in late 2020.
For more information, click [here](#).

(NEW) [President's Cancer Panel - Improving Resilience and Equity in Cancer Screening: Innovation to Increase Screening](#)

(NEW) [V Foundation Awards Two Huntsman Cancer Institute Researchers](#)

(NEW) [Through the Window and into the Mirror: Narratives of African American STEM Professionals](#)

[NIH to support radical approaches to nationwide COVID-19 testing and surveillance](#)

[Study Reveals Gene Regulation May Influence Racial Disparities in Breast Cancer Survival](#)

[Young Women Needed for Breast Cancer Research via Online Focus Groups](#)

[National Survey Reveals Racial Differences in Perceptions of Inequities in Health Care and Concerning Delays in Cancer Screenings Amid](#)

[COVID-19](#)

[NIH to support 85 new grants featuring high-risk, high-reward research](#)

[Saying YES: Inspiring a Diverse Generation of Cancer Scientists](#)

[NIMHD's Pioneers in Minority Health and Health Disparities Q & A Campaign](#)

[NIH funds community engagement research efforts in areas hardest hit by COVID-19](#)

TRAINING OPPORTUNITIES



NATIONAL CANCER INSTITUTE

Graduate Student Recruiting Program

(NEW) The National Cancer Institute (NCI) is actively seeking candidates to participate in the Graduate Student Recruiting Program, to be held May 4 to May 5, 2021 in Bethesda, Maryland. The purpose of this event is to recruit outstanding senior graduate students to postdoctoral positions at the NCI. We will be selecting up to 25 students to spend 2 days discussing their research through poster sessions, meeting other students from around the U.S., learning about the research at NCI and exploring postdoctoral training opportunities through interviews with NCI principal investigators.

The application deadline is February 5, 2021.

To apply, please visit the [website](#).

Tribal Researchers' Cancer Control Fellowship Program

(NEW) The overall goal of the Tribal Researchers' Cancer Control Fellowship Program (June 6-18, 2021) is to reduce cancer incidence and mortality and improve cancer survival in tribal communities through the efforts of AI/AN researchers. This fellowship program offers training and mentorship to prepare researchers to design and implement cancer-related research projects within AI/AN communities. Costs associated with the training, including travel, will be covered. American Indian/Alaska Native graduate students and researchers with a demonstrated interest in cancer prevention and control are eligible to apply.

The application deadline is March 12, 2021.

To apply, please download the [application](#).

The Cancer Prevention and Control (CAPAC) Research Training Program, will be hosted by the University of Puerto Rico Comprehensive Cancer Center. The program will recruit participants from all racial/ethnic groups and cultural backgrounds to participate in a hands-on research experience in Puerto Rico. The CAPAC Research Training Program will provide trainees with seminars and workshops, a stipend, and support for travel, housing and research activities.

The application deadline is Feb.15, 2021.



For more information, click on the [flyer](#).
To apply, please visit the [website](#).



Moffitt Cancer Center Post-Doctoral Training in Behavioral Oncology

The H. Lee Moffitt Cancer Center & Research Institute, an NCI-designated Comprehensive Cancer Center, invites applications to its post-doctoral training program in behavioral oncology. This NCI-supported T32 interdisciplinary training program is designed to prepare fellows for careers as independent investigators engaged in research on behavioral aspects of cancer prevention, detection and control. We are particularly interested in candidates with an interest in nicotine dependence and tobacco control, cervical cancer prevention, cultural and literacy issues in cancer prevention and control, disparities in cancer care, quality of life and symptom management issues in cancer survivors, psychosocial and behavioral aspects of familial and hereditary cancer, and health care provider practices in cancer prevention and control.

The application deadline is Jun. 30, 2021 or until all positions are filled.

To apply, please see the [flyer](#).

AWARDS - SCHOLARSHIPS - INTERNSHIPS

The NCI Division of Cancer Biology is excited to announce the **2021 CSBC/PS-ON Summer Undergraduate Research Program (CSBC/PS-ON SURP)**. The program includes a 10-week paid fellowship, a 2-day research conference at NIH Bethesda, and the virtual mini-DREAM curriculum hosted by CSBC and PS-ON investigators. The program covers all expenses, including a stipend (\$4,000), housing at the host institute, and all travel.

The application deadline is Feb. 5, 2021.

For more information, click on the [flyer](#).
To apply, please visit the [website](#).

16
WORLD CLASS INSTITUTIONS

10
WEEKS OF MENTORED RESEARCH

1
TRIP TO WASHINGTON DC



Southeast Partnership for Improving Research
& Training in Cancer Health Disparities

The SPIRIT-CHD Summer Internship Program provides students in Tampa, Florida and New Orleans, Louisiana with 8-weeks of intensive clinical and/or behavioral research studies under the mentorship of an assigned expert research scientist from Moffitt Cancer Center in Tampa, Florida and Research Institute and Louisiana State University Health Sciences Center in New Orleans, Louisiana.

The application deadline for undergraduate students applying to the Moffitt Cancer Center program has passed. The application deadline for medical students applying to the Moffitt Cancer Center program and all students applying to the LSUHSC program is Feb. 15, 2021.

To apply, please visit the [website](#).

EMPLOYMENT OPPORTUNITIES

(NEW) Postdoctoral Fellow, Division of Public Health Sciences, Washington University of School of Medicine in St. Louis, Siteman Cancer Center

Postdoctoral Fellow, Cancer Epigenetics Program, University of Miami Health System - Sylvester Comprehensive Cancer Center

Coordinator of Biospecimen Operations, Division of Cancer Epidemiology and Genetics (DCEG), National Cancer Institute (NCI)

Chief Officer for Scientific Workforce Diversity, National Institutes of Health (NIH)

Post-Doctoral Fellow, Virginia Commonwealth University, Virginia Commonwealth University Massey Cancer Center

Cancer Epidemiologist, University of Iowa College of Public Health, Holden Comprehensive Cancer Center

Assistant/Associate Professors, Blavatnik Institute/Life Sciences, Harvard Medical School

C-TIDE Post-Doctoral Fellow, University of Miami Miller School of Medicine, Sylvester Comprehensive Cancer Center

Computational Scientist I, Cancer Genomics Research Laboratory (CGR), National Cancer Institute

Post-Doctoral Fellow, Division of Health Equities, Beckman Research Institute, City of Hope Medical Center

Faculty Member, Department of Health Behavior and Policy, Virginia Commonwealth University

Faculty Member, Department of Health Outcomes & Behavior, H. Lee Moffitt Cancer Center & Research Institute

Health Economist, Healthcare Assessment Research Branch, National Cancer Institute

Medical Officer, Health Systems and Interventions Research Branch, National Cancer Institute

USAJOBS - Various Positions,
Varying locations, Domestic & International

FUNDING OPPORTUNITIES

(NEW) Lustgarten Foundation - AACR Career Development Awards for

[Pancreatic Cancer Research](#) | Applications are due February 11, 2021

[Funding Opportunity Announcement: Social and Behavioral Intervention Research to Address Modifiable Risk Factors for Cancer in Rural Populations \(R01 Clinical Trial Required\)](#) | Applications are due March 15, 2021; January 18, 2022

[Funding Opportunity Announcement: Vaccine Hesitancy and Uptake Among Populations With Health Disparities](#) | Applications are due February 5, 2021

[Funding Opportunity Announcement: Tailoring Follow-up Care for Cancer Survivors Using Risk-Stratified Pathways](#) | Applications are due February 5, 2021

[Funding Opportunity Announcement: Health Services Research on Minority Health and Health Disparities \(R01- Clinical Trial Optional\)](#) | Applications are due March 17, 2021; November 17, 2021; March 17, 2022; November 17 2022; February 17, 2023

[Funding Opportunity Announcement: Tobacco Control Policies to Promote Health Equity \(R01 Clinical Trial Optional\)](#) | Earliest Submission Date - November 12, 2020

F99/K00: The NCI Predoc to Postdoc Transition Award Funding Opportunity Announcement (FOA) to be issued in November



The NCI Predoctoral to Postdoctoral Fellow Transition (F99/K00) Award supports outstanding Ph.D. and other Research Doctoral candidates complete their dissertation research training (F99 phase) and transition in a timely manner to mentored, cancer-focused postdoctoral career development research positions (K00 phase).

For more information please click [here](#).

[2021 SBIR Contract Solicitation](#) | Application dates vary ([Apply to the Expert SBIR/STTR Application Assistance Program!](#))

[Faculty Institutional Recruitment for Sustainable Transformation \(FIRST\)](#) | Application dates vary

- [RFA-RM-20-022: NIH Faculty Institutional Recruitment for Sustainable Transformation \(FIRST\) Program: FIRST Cohort \(U54 Clinical Trial Optional\)](#)
- [RFA-RM-20-023: NIH Faculty Institutional Recruitment for Sustainable Transformation \(FIRST\) Program: FIRST Coordination and Evaluation Center \(U24 Clinical Trial Not Allowed\)](#)
- Press Release: [NIH to fund cohort recruitment and development program to enhance diversity and inclusion among biomedical faculty](#)

[Funding Opportunity Announcement: Research Supplements to Promote Diversity in Health-Related Research \(Admin Supp - Clinical Trial Not Allowed\)](#) | Application dates vary

[Funding Opportunity Announcement: Mechanisms and Consequences of Sleep Disparities in the U.S. \(R01 - Clinical Trial Not Allowed\)](#) | Applications are due July 14, 2021; July 14, 2022

[Funding Opportunity Announcement: Basic Research in Cancer Health Disparities \(R01 and R21\)](#) | Applications are due February 8, 2021 (R01); February 18, 2021 (R21)

[Funding Opportunity Announcement: Research to Reduce Morbidity and Improve Care for Pediatric, and Adolescent and Young Adult \(AYA\) Cancer Survivors \(R01 and R21 - Clinical Trial Optional\)](#) | First available due date - June 30, 2020



National Institute
on Minority Health
and Health Disparities

NIMHD

NIMHD Exploratory/Developmental Research Grant Program (R21 - Clinical Trial Optional)

NIMHD invites applications to support short-term exploratory or developmental research projects that have the potential to break new ground in the fields of minority health and/or health disparities or extend previous discoveries toward new directions or applications that can directly contribute to improving minority health and/or reducing health disparities in the U.S.

For more information please visit the [website](#).

[Research Career Development Awards \(K-Series\)](#) - National Institutes of Health (NIH). **Application deadlines vary**

[NIH Loan Repayment Programs \(LRPs\)](#). **Application deadlines vary**

Social Epigenomics Research Focused on Minority Health and Health Disparities (R01- Clinical Trial Not Allowed) | Applications are due November 8, 2021 | [PAR-19-372](#)

NCI Mechanisms of Disparities in Etiology and Outcomes of Lung Cancer in the US: The Role of Risk and Protective Factors (NEW) (R01 Clinical Trial Not Allowed) | Applications are due March 4, 2021 | [PAR-19-018](#)

NCI Mechanisms of Disparities in Etiology and Outcomes of Lung Cancer in the US: The Role of Risk and Protective Factors (NEW) (R21 Clinical Trial Not Allowed) | Applications are due March 4, 2021 | [PAR-19-019](#)

Looking for additional [funding opportunities](#)? A full list of CRCHD funding opportunities as well as select NIH opportunities is available online.

NCI's Research Interests to Improve Interprofessional Teamwork and Coordination During Cancer Diagnosis and Treatment

This [NOSI](#) highlights the Healthcare Delivery Research Program's interest in receiving investigator-initiated grant applications focused on understanding and improving interprofessional teamwork and coordination during cancer diagnosis and treatment.

Research encouraged through this NOSI includes, but is not limited to, studies that

- Identify modifiable features of **care team structure** (e.g., care team composition or organization), associated with differences in cancer care quality and patient outcomes.

- Identify modifiable features of **care team processes** (e.g., decision making, communication, coordination behaviors, collaboration, leadership) associated with differences in cancer care quality and patient outcomes.
- Identify **characteristics at the patient, caregiver, care team, delivery organization, health system, and/or community levels** that influence the functioning and effectiveness of interprofessional cancer care teams.
- Develop and test interventions designed to improve cancer care quality and patient outcomes by **modifying the structure and/or functioning** of interprofessional teams.
- Develop and test interventions designed to improve cancer care quality and patient outcomes by **engaging patients and caregivers** as members of their cancer care team.

Application and Submission Information

This NOSI applies to due dates on or after **September 25, 2019 through January 8, 2022**. Applications related to this NOSI may be submitted using the following funding opportunity announcements or future reissuances:

- [PAR-18-869](#) Modular R01s in Cancer Control and Population Sciences (R01 Clinical Trial Optional)
- [PAR-18-559](#) Cancer Prevention and Control Clinical Trials Grant Program (R01 Clinical Trial Required)
- [PA-19-056](#) NIH Research Project Grant (Parent R01 Clinical Trial Not Allowed)

BEST PRACTICES & RESOURCES



Physical Sciences-Oncology Network
Bioresource Core Facility

The Physical Sciences-Oncology Network Bioresource Core Facility (PBCF) at ATCC is an NCI-funded resource for all members of the Physical Sciences-Oncology Network (PS-ON), Cancer Systems Biology Consortium (CSBC), and all NIH-funded cancer researchers. The PBCF serves as a centralized distributor and repository providing common stocks of an authenticated set of non-malignant and cancerous cell lines, cell culture reagents, and related standard operating protocols. Datasets of published work using the PBCF cell lines are requested to be reported to the PBCF and the NCI.

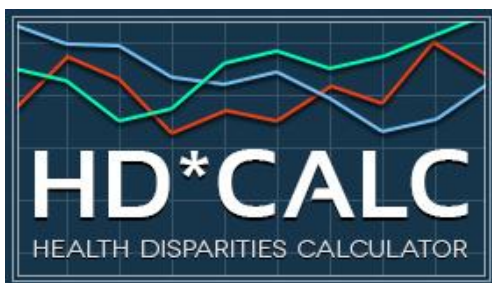
For more information, please visit the [website](#).



Join NRMN Today!

Our resources include mentor certification, professional development webinars, a social networking platform called MyNRMN, and facilitator certification through the Center for the Improvement of Mentored Experiences in Research (CIMER)

For more information, please view the [flyer](#).

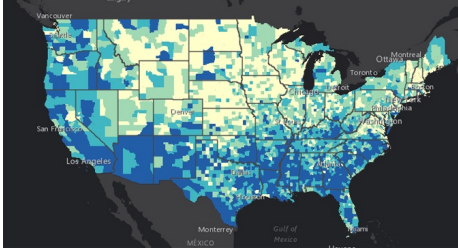


Health Disparities Calculator 2.0

The Health Disparities Calculator (HD*Calc) is statistical software designed to generate multiple summary measures to evaluate and monitor health disparities (HD). HD*Calc was created as an extension of [SEER*Stat](#) that allows the user to import SEER data or other population-based health data, such as National Health Survey sample data from the National Health Interview Survey (NHIS) or the Behavioral Risk Factor Surveillance System (BRFSS), and calculate any of eleven disparity measures.

To download the new Health Disparities Calculator 2.0, please visit the following [website](#).

Centers for Disease Control and



Prevention Social Vulnerability Index

Social vulnerability refers to the resilience of communities when confronted by external stresses on human health, stresses such as natural or human-caused disasters, or disease outbreaks. Reducing social vulnerability can decrease both human suffering and economic loss. CDC's Social Vulnerability Index uses 15 U.S. census variables at tract level to help local officials identify communities that may need support in preparing for hazards; or recovering from disaster.

The Geospatial Research, Analysis, and Services Program (GRASP) created and maintains CDC's Social Vulnerability Index. For more information visit [here](#).

- [\(NEW\) Mil Gracias \(A Thousands Thanks\) for Not Smoking Indoors!](#)
- [\(NEW\) American Cancer Society Facts and Figures 2021](#)
- [\(NEW\) Similarities in Risk for COVID-19 and Cancer Disparities](#)
- [Scholarships for Latino Students](#)
- [PhenX Social Determinants of Health Assessments Collection](#)
- [The Diversity–Innovation Paradox in Science](#)
- [Differences in Stage of Cancer at Diagnosis, Treatment, and Survival by Race and Ethnicity Among Leading Cancer Types](#)
- [2020 AACR Annual Report](#)
- [AACR Cancer Progress Report 2020](#)
- [AACR Cancer Disparities Progress Report 2020](#)
- [Cancer Health Disparities | Did You Know? - NCI](#)
- [Promoting Yourself, Your Research and the New NIH Biosketch.](#)
- [NIH Biosketch - What is new in the New Biosketch?](#)
- NIH Tips on [Writing Your Grant Application](#)
- Find Funded NIH Projects - [NIH Reporter](#)
- [Cancer Health Disparities Definitions - NCI](#)
- [Public Health Employment Connection - Updated Job Opportunities Nationwide](#)
- [Jobs @ NIH - Explore jobs and training opportunities](#)
- [Colorado Health Literacy Coalition](#)
- [Communicate Health](#)
- [Health Literacy Media](#)
- [Health Literacy Research Conference](#)
- [Institute of Healthcare Advancement \(IHA\)](#)
- [National Academy of Sciences: Roundtable on Health Literacy](#)
- [Wisconsin Health Literacy](#)

Connect with your GMaP Partners

UAB at Birmingham
University of Arkansas - MS
Moffitt Cancer Center

[Tiffany Carson](#)
[Michael Preston](#)
[Cathy Meade](#)

University of Miami
Bethune Cookman University
Emory University
Florida A & M University
Morehouse School of Medicine
Xavier University of Louisiana
Louisiana State University
Tulane University
University of Florida
University of Mississippi
Washington University in St. Louis
Ponce Health Sciences University

[Cynthia Thiry](#)
[Deanna Wathington](#)
[Theresa Gillespie](#)
[Renee Reams](#)
[Brian Rivers](#)
[Margarita Echeverri](#)
[Lucio Miele](#)
[Asim Abdel Mageed](#)
[Folakemi Odedina](#)
[Roy Duhé](#)
[Aimee James](#)
[Idhaliz Flores](#)

Cancer Training at NCI

STAY CONNECTED

Become a GMaP Partner and stay connected. Let us know what information you want to know, how can we better help, or if you're interested in collaboration. Do you want us to highlight your programs? Join [GMap Region 2](#) today and let us know what information you want us to feature in our next newsletter!



GMap Region 2 | 813-745-8726 | GMap.Region2@moffitt.org | [Website](#)

**You are receiving this email as a Cancer
Researcher in GMaP Region 2**