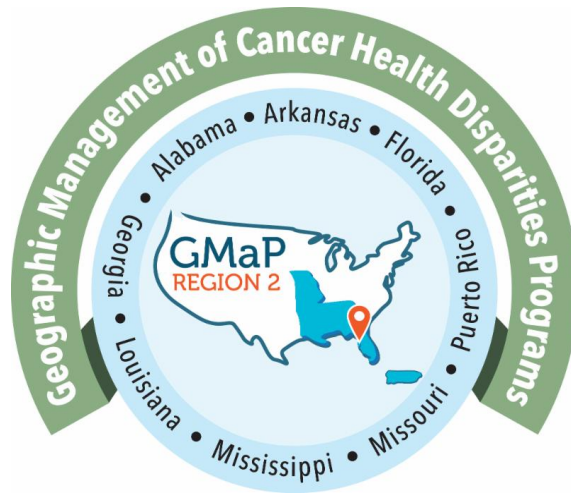


For a PDF version of this email, click [here](#).



Geographic Management of Cancer Health Disparities Program (GMAP) Region 2 *June 2021 E-Blast*

GMAP is an integrated network of 7 regions across the United States. Moffitt Cancer Center in Tampa, FL serves as the hub for GMAP Region 2 which currently includes more than 40 partner institutions in Alabama, Arkansas, Florida, Georgia, Louisiana, Missouri, Mississippi and Puerto Rico.

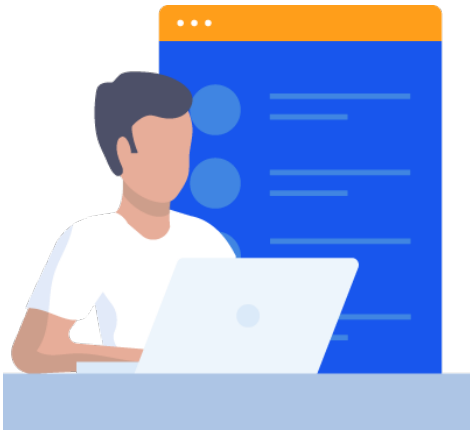
*You are receiving this email as a Cancer
Researcher in GMAP Region 2*

Connect with GMAP Region 2 on Social Media!



Click to Visit our GMAP Region 2 Website

Would you like to introduce yourself and your work to our region? The GMAP Region 2 June 2021 newsletter is coming out soon! Send us an email to let us know you are interested and we will have you featured! We will also accept news, job, and funding announcements.



The Trainee/ Early Stage Investigator (ESI) Research Reimbursement is intended to support a range of cancer and cancer health disparities research development activities. Applicants must be located in a GMaP Region 2 state/territory, be a trainee or Early Stage Investigator (ESI), and submit a complete application.

To learn more or apply, click [here!](#)



The Travel Award is intended to support career development related to cancer research or cancer health disparities research. This scholarship will provide reimbursement (e.g. registration, airfare, hotel, etc.) for ESI's or Trainees to present research at conferences and attend skills workshops/trainings. Applicants must be located in a GMaP Region 2 state/territory, be a trainee or Early Stage Investigator (ESI), and submit a complete application.

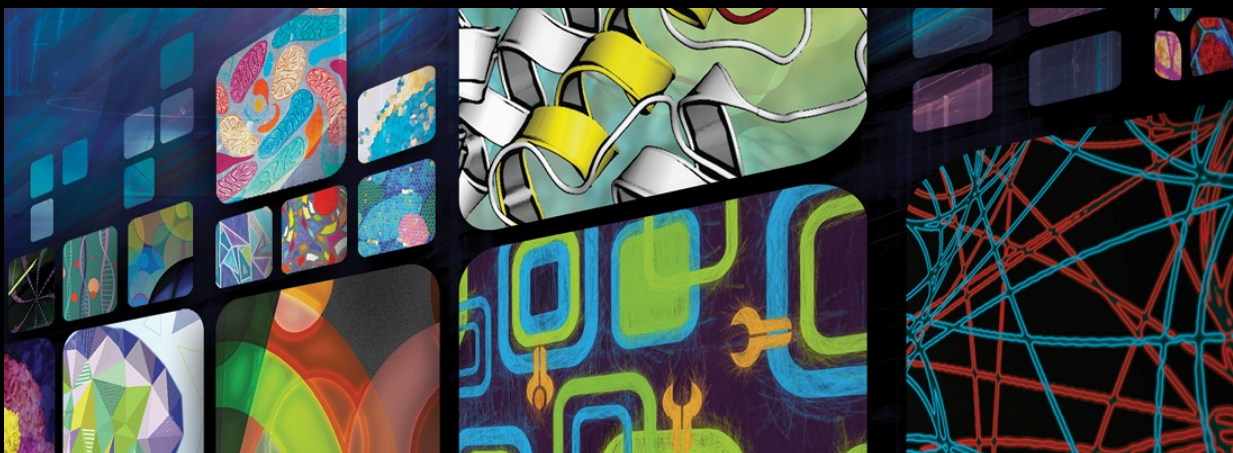
To learn more or apply, click [here!](#)



The Registration Support Scholarship is intended to support underrepresented scholars and investigators in cancer research or cancer health disparities research by providing reimbursement for registration fees associated with virtual or in-person meetings, conferences, workshops or training.

To learn more or apply, click [here!](#)

NEWS - EVENTS - CONFERENCES



(NEW) The Cancer Discovery 10th Anniversary Symposium: The Next Decade of Discoveries will take place virtually from **June 21-22, 2021**. The first Cancer Discovery Symposium will be a celebration of the 10th anniversary of the Journal's launch: key thought leaders will discuss the emerging areas of cancer research that will significantly move the field forward in the next 10 years. Moderated by the Editors-in-Chief of Cancer Discovery, the symposium includes topics that span basic, translational, and clinical areas of cancer research and each presentation will be followed by a question-and-answer segment.

To register, please visit the [website](#).



INSS 2021

INTERDISCIPLINARY NUTRITION SCIENCES SYMPOSIUM

HETEROGENEITY IN OBESITY: IMPLICATIONS FOR CANCER
AND RELATED OBESITY-ASSOCIATED OUTCOMES

JUNE 21-22 • VIRTUAL MEETING

The Interdisciplinary Nutrition Sciences Symposium is an annual translational nutrition science conference that will take place virtually from **June 21-22, 2021**. The theme for 2021 is Heterogeneity in Obesity: Implications for Cancer and Related Obesity-Associated Outcomes. This conference will build on the dialogue we began in our successful 2019 symposium to develop best practices for translational nutrition science and to generate ideas for proposals and collaborative projects, which will lead public health, therapeutic, and clinical efforts to reduce obesity and its associated comorbidities.

To register, please visit the [website](#).



In many countries around the world, patients under age 50 are fighting, some dying, of colon and rectal cancers/bowel cancers. This phenomenon, called Early-Age Onset Colorectal Cancer (EAO CRC) or Early Onset CRC (EOCRC), is an urgent issue in cancer research and patient care around the globe. We all want to know why this is happening, fully aware that for some, time is running out.

Don't miss the 2021 Rally on Research: Early-Age Onset Colorectal Cancer, which will take place virtually from **June 24-25, 2021**. Inspired by Dr. Jose Perea in Madrid, Spain, come be part of bridging the science and finding your place on the international path to a cure.

To register, please visit the [website](#).



AAACE

 American Association
for Cancer Education

(NEW) We are pleased to announce the next event in the AAACE Engagement Lounge series! On **Tuesday, 29 June 2021, from 3:00 to 4:30 PM EDT**, AAACE will host its next Engagement Lounge on the topic of *Choosing and Using Standardized Measures to Evaluate Your Education Program*, sponsored by the AAACE Education Committee.

To register, please visit the [website](#).



NATIONAL CANCER INSTITUTE

www.cancer.gov

NCI CRCHD Professional Development Workshop and Mentored Mock Review

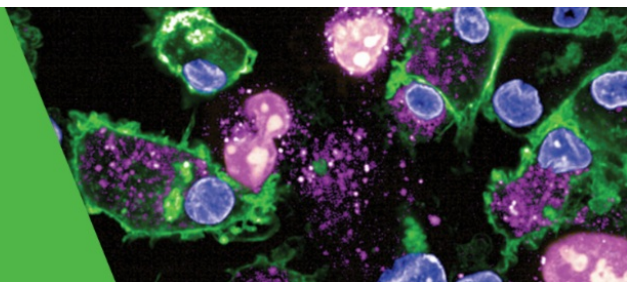
(NEW) On behalf of the NCI Center to Reduce Cancer Health Disparities (CRCHD), we are pleased to announce that registration is open for the upcoming virtual 2021 Professional Development Workshop and Mentored Mock Review (PDW & MMR). The PDW & MMR will be held from **Monday, July 19 through Thursday, July 22, 2021**.

The theme for the Workshop is "Transitioning to Independence: Charting Your Course to a Cancer Research Career." At this meeting, CRCHD will focus on sharing information and experiences with recipients of CRCHD training awards. Graduate students, postdocs, and early-career investigators who are supported by CRCHD are strongly encouraged to attend. As a reminder, Career Development (K Award) grantees are required to attend the PDW & MMR at least two times during the duration of their awards.

To register, please visit the [website](#).

AACR-NCI-EORTC VIRTUAL INTERNATIONAL CONFERENCE ON MOLECULAR TARGETS AND CANCER THERAPEUTICS

October 7 - 10, 2021
Virtual Meeting, Save the Dates

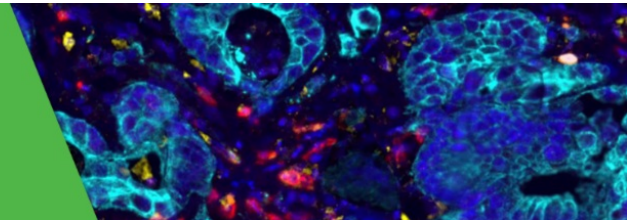


The American Association for Cancer Research (AACR) has made the difficult decision, after careful consideration and a comprehensive evaluation of currently available information related to the novel coronavirus (COVID-19) outbreak, to terminate the AACR-NCI-EORTC International Conference on Molecular Targets and Cancer Therapeutics originally scheduled for October 7-11, 2021 in Boston, MA. A virtual conference will take place from **October 7-10, 2021**.

To register, please visit the [website](#).

AACR VIRTUAL SPECIAL CONFERENCE: COLORECTAL CANCER

October 21 - 22, 2021
Virtual Meeting



Register today to join the AACR Virtual Special Conference: Colorectal Cancer where co-chairs Scott Kopetz, Robert J. Coffey and Jiyoung Ahn will discuss the most recent discoveries in Colorectal Cancer (CRC). This conference will take place from **October 21-22, 2021** and will feature the latest findings from recognized young, rising star investigators, with sessions to focus on all aspects of CRC research, spanning from CRC incidence prevention and surveillance to early-onset CRC research, and novel therapies for advanced metastatic CRC.

To register, please visit the [website](#).



International Cancer Education Conference
Integrating Culture, Spirituality, and Social Support into Cancer Education to Improve Health Equity

October 2021 • Online @ 2021.attendicec.org

Make plans to attend the 2021 International Cancer Education Conference (ICEC), to be held virtually in **October!** The 2021 ICEC is co-organized by the American Association for Cancer Education (AACE), the Cancer Patient Education Network (CPEN) and the European Association for Cancer Education (EACE).

The 2021 conference plans to draw in more than 250 educators, physicians, nurses, public health professionals, researchers, students and social workers from around the world. Continuing Education credits will be provided for physicians, nurses, CHES professionals, and social workers. Dates and details will be coming soon as the program develops.

Late-breaking Abstract Submission Deadline: August 9, 2021
For more information, click [here](#).

The Health Literacy Annual Research Conference 2021 will take place remotely on **November 1-2, 2021**. The meeting is an opportunity to advance the field of health literacy, a method to raise the quality of our research, and a venue for professional development. Our aim is to attract a full range of investigators engaged in health literacy research including those involved in a broad array of public health, health services, epidemiology, translational, and interventional research activities.

Call for Panels, Special Interest Groups, Workshops and Scientific
Abstract Proposals Deadline: July 1, 2021
For more information, click [here](#).



ABRCMS 2021

November 10-13, 2021 | Virtual

(NEW) The Annual Biomedical Research Conference for Minority Students (ABRCMS), recipient of the 2019 AIMBE Excellence in STEM Education Award, is one of the largest communities of underrepresented minorities in science, technology, engineering and mathematics. Students attend this conference to present their research, enhance professional development skills, explore graduate schools, and network. Research faculty and program directors play an essential role in mentoring students and learning strategies for facilitating student success. This year the conference will take place virtually from **November 10-13, 2021**.

To register, please visit the [website](#).

[Upcoming Changes to the Biographical Sketch and Other Support Format Page for Due Dates on or after May 25, 2021](#)

[Implementation of Changes to the Biographical Sketch and Other Support Format Page](#)

[Request for information \(RFI\) on enhancing the science for the Environmental influences on Child Health Outcomes \(ECHO\) program](#)

[Request for Information \(RFI\): Seeking Stakeholder Input on Enhancing Cancer Health Disparities Research](#)

[Sign Up to Participate in a Pilot Program Aimed at Diversifying Cancer Clinical Trials](#)

*You're invited to participate in a pilot project as part of an American Society of Clinical Oncology (ASCO) and Association for Community Cancer Centers (ACCC) collaboration. The purpose of this collaboration is to increase clinical trial participation among patients from underrepresented racial and ethnic groups.

TRAINING OPPORTUNITIES

JOIN OUR TEAM

Physician-Scientist Early Investigator Program

Are you a Physician-Scientist interested in transitioning to an independent investigator conducting basic, translational or patient-oriented research?

This highly competitive program offers:

- A mentored three-to-five year independent research program
- Extensive resources supporting innovative, high-impact bench-to-bedside research in the world's largest hospital devoted exclusively to clinical research
- Competitive salary and loan repayment opportunities
- Opportunity to serve as principal investigator on clinical trials
- A highly collaborative environment with access to a broad range of scientific and clinical expertise and cutting-edge medical technologies

To learn more, please view the [flyer](#).

 **NATIONAL CANCER INSTITUTE**
Cancer Prevention Fellowship Program

Are you a researcher or clinician with a demonstrated interest in cancer prevention? If so, we want to hear from you! Be a part of the Cancer Prevention Fellowship Program that supports postdoctoral research and professional development, plus offers:

- Competitive stipends, relocation expenses, health insurance benefits, and travel allowances
- Support for up to four years
- Opportunity to earn your MPH, sponsored by NCI
- Research opportunities with experienced NCI mentors
- A cohort of fellows spanning STEM and other fields

Applications due by August 16, 2021.

To apply, please visit the [website](#).

DATA SCIENCE FELLOWSHIP

Through Our Big Data Scientist Training
Enhancement Program

The Big Data Scientist Training Enhancement Program (BD-STEP) is a two-year fellowship opportunity offered through the National Cancer Institute (NCI) and the Veterans Health Administration (VHA) that uses data science to advance cancer research and patient care. Competitively selected postdoctoral fellows are placed in four VA medical centers across the country to work with clinicians and interdisciplinary researchers to address important patient-centered health challenges.

To apply, please view the [flyer](#).



Would you like to learn more about the NIH review process? The Early Career Reviewer Program might be for you! The program aims to help early career scientists become more competitive as grant applicants through first-hand experience with peer review and to enrich and diversify CSR's pool of trained reviewers.

To apply, please visit the [website](#).

The BMSF in partnership with National Medical Fellowships (NMF) has developed the BMSF Diversity in Clinical Trials Career Development Program (DCTCDP) to tackle low minority clinical trial recruitment through a program designed to intentionally train clinical investigators interested in increasing diversity in clinical trials. This program will provide early stage clinical investigators with distinct training, skills, and support to initiate and conduct clinical trials that will support the recruitment of underrepresented minorities (URM) patients into clinical trial research.

Applications due by July 2, 2021 at 11:59 PM.

To apply, please visit the [website](#).



Discover UChicago will be held on October 17-19, 2021. The University of Chicago is offering talented individuals traditionally underrepresented in their fields an expenses-paid visit weekend to explore graduate education at our institution. Join us for a series of graduate admissions workshops, conversations with world-renowned faculty and administrative staff, and social events with current graduate students. Receive advice on submitting a competitive application to graduate programs and learn how to develop your own career as a scientist, academic, or professional.

Applications due by August 16, 2021 at 11:59 PM.

To apply, please visit the [website](#).



Moffitt Cancer Center Post-Doctoral Training in Behavioral Oncology

The H. Lee Moffitt Cancer Center & Research Institute, an NCI-designated Comprehensive Cancer Center, invites applications to its post-doctoral training program in behavioral oncology. This NCI-supported T32 interdisciplinary training program is designed to prepare fellows for careers as independent investigators engaged in research on behavioral aspects of cancer prevention, detection and control. We are particularly interested in candidates with an interest in nicotine dependence and tobacco control, cervical cancer prevention, cultural and literacy issues in cancer prevention and control, disparities in cancer care, quality of life and symptom management issues in cancer survivors, psychosocial and behavioral aspects of familial and hereditary cancer, and health care provider practices in cancer prevention and control.

The application deadline is Jun. 30, 2021 or until all positions are filled.

To apply, please see the [flyer](#).

EMPLOYMENT OPPORTUNITIES

(NEW) [Research Associate - Mass Spectrometry Proteomics](#), Frederick National Laboratory, National Cancer Institute

[Education Outreach & Communications Manager](#), University of Chicago Medicine Comprehensive Cancer Center (UCCCC)

[Cancer Research Training Award \(CRTA\) Fellow](#), Healthcare Delivery Research Program, National Cancer Institute

[Cancer Prevention Fellow](#), Locations Vary

[Epidemiologist/Research Scientist II](#), Locations Vary

[Assistant Professor](#), Department of Health Promotion and Community Health Sciences, Texas A&M University

[Research Assistant](#), Division of Cancer Epidemiology and Genetics, National Cancer Institute

[Research Assistant \(Contractor\)](#), Division of Cancer Epidemiology and Genetics, National Cancer Institute

[Postdoctoral Fellowship \(Occupational & Environmental Epidemiology\)](#), Division of Cancer Epidemiology and Genetics, National Cancer Institute

[Postdoctoral Fellowship \(Integrative Tumor Epidemiology\)](#), Division of Cancer Epidemiology and Genetics, National Cancer Institute

[Postdoctoral Fellowship \(Infections and Immunoepidemiology\)](#), Division of Cancer Epidemiology and Genetics, National Cancer Institute

[Postdoctoral Fellowship \(Laboratory of Translational Genomics\)](#), Division of Cancer Epidemiology and Genetics, National Cancer Institute

[Postdoctoral Fellowship \(Biostatistics\)](#), Division of Cancer Epidemiology and Genetics, National Cancer Institute

[Predoctoral/Postdoctoral Fellowship \(Metabolic Epidemiology\)](#), Division of Cancer Epidemiology and Genetics, National Cancer Institute

[Post-Baccalaureate Fellowship \(Biostatistics\)](#), Division of Cancer Epidemiology and Genetics, National Cancer Institute

[Post-Baccalaureate Fellowship \(Computational Pathology\)](#), Division of Cancer Epidemiology and Genetics, National Cancer Institute

[Cancer Immunology Postdoctoral Fellow](#), Department of Immunology, Moffitt Cancer Center

[C-TIDE Post-Doctoral Fellow](#), University of Miami Miller School of Medicine, Sylvester Comprehensive Cancer Center

[Computational Scientist I](#), Cancer Genomics Research Laboratory (CGR), National Cancer Institute

[Medical Officer](#), Health Systems and Interventions Research Branch, National Cancer Institute

[USAJOBS - Various Positions](#), Locations Vary, Domestic & International

FUNDING OPPORTUNITIES

(NEW) [The Early Detection Research Network: Data Management and Coordinating Center \(U24 Clinical Trial - Not Allowed\)](#) | Applications are due September 9, 2021

(NEW) [The Early Detection Research Network: Clinical Validation Centers \(U01 Clinical Trial Optional\)](#) | Applications are due September 9, 2021

(NEW) The Early Detection Research Network: Biomarker Characterization Centers (U2C - Clinical Trial Not Allowed) | Applications are due September 9, 2021

Exercise and Nutrition Interventions to Improve Cancer Treatment-Related Outcomes (ENICTO) in Cancer Survivors Consortium (U01 Clinical Trial Required) | Applications are due July 14, 2021

Coordinating Center for Exercise and Nutrition Interventions to Improve Cancer Treatment-Related Outcomes (ENICTO) in Cancer Survivors Consortium (U24 Clinical Trial Not Allowed) | Applications are due July 14, 2021

Proteome Characterization Centers (PCCs) for Clinical Proteomic Tumor Analysis Consortium (U24 Clinical Trial Not Allowed) | Applications are due June 30, 2021

Proteogenomic Data Analysis Centers (PGDACs) for Clinical Proteomic Tumor Analysis Consortium (U24 Clinical Trial Not Allowed) | Applications are due June 30, 2021

Proteogenomic Translational Research Centers (PTRCs) for Clinical Proteomic Tumor Analysis Consortium (U01 Clinical Trial Not Allowed) | Applications are due July 30, 2021

Centers on Telehealth Research for Cancer-Related Care (P50 Clinical Trial Required) | Applications are due July 20, 2021

Emergency Award: Community-engaged COVID-19 Testing Interventions among Underserved and Vulnerable Populations – RADx-UP Phase II (U01 Clinical Trial Optional) | Applications are due July 7, 2021

Emergency Award: RADx-UP - Social, Ethical, and Behavioral Implications (SEBI) Research on Disparities in COVID-19 Testing among Underserved and Vulnerable Populations (U01 Clinical Trials Optional) | Applications are due July 7, 2021

Notice of Intent to Publish a Research Opportunity Announcement for RADx-UP Return to School Diagnostic Testing Approaches (OT2 Clinical Trial Optional) | Applications deadline TBD

The RADx-UP CDCC Community Collaboration Mini-Grant Program | Applications are due August 13th, 2021; November 12th, 2021

Funding Opportunity Announcement: Social and Behavioral Intervention Research to Address Modifiable Risk Factors for Cancer in Rural Populations (R01 Clinical Trial Required) | Applications are due January 18, 2022

Funding Opportunity Announcement: Health Services Research on Minority Health and Health Disparities (R01- Clinical Trial Optional) | Applications are due November 17, 2021; March 17, 2022; November 17 2022; February 17, 2023

Funding Opportunity Announcement: Tobacco Control Policies to Promote Health Equity (R01 Clinical Trial Optional) | Earliest Submission

F99/K00: The NCI Predoc to Postdoc Transition Award Funding Opportunity Announcement (FOA) to be issued in November



The NCI Predoctoral to Postdoctoral Fellow Transition (F99/K00) Award supports outstanding Ph.D. and other Research Doctoral candidates complete their dissertation research training (F99 phase) and transition in a timely manner to mentored, cancer-focused postdoctoral career development research positions (K00 phase).

For more information please click [here](#).

[2021 SBIR Contract Solicitation](#) | Application dates vary ([Apply to the Expert SBIR/STTR Application Assistance Program!](#))

[Faculty Institutional Recruitment for Sustainable Transformation \(FIRST\)](#)

| Application dates vary

- [RFA-RM-20-022: NIH Faculty Institutional Recruitment for Sustainable Transformation \(FIRST\) Program: FIRST Cohort \(U54 Clinical Trial Optional\)](#)
- [RFA-RM-20-023: NIH Faculty Institutional Recruitment for Sustainable Transformation \(FIRST\) Program: FIRST Coordination and Evaluation Center \(U24 Clinical Trial Not Allowed\)](#)
- Press Release: [NIH to fund cohort recruitment and development program to enhance diversity and inclusion among biomedical faculty](#)

[Funding Opportunity Announcement: Research Supplements to Promote Diversity in Health-Related Research \(Admin Supp - Clinical Trial Not Allowed\)](#) | Application dates vary

[Funding Opportunity Announcement: Mechanisms and Consequences of Sleep Disparities in the U.S. \(R01 - Clinical Trial Not Allowed\)](#)

| Applications are due July 14, 2021; July 14, 2022

[Funding Opportunity Announcement: Research to Reduce Morbidity and Improve Care for Pediatric, and Adolescent and Young Adult \(AYA\) Cancer Survivors \(R01 and R21 - Clinical Trial Optional\)](#) | First available due date - June 30, 2020



National Institute
on Minority Health
and Health Disparities

NIMHD

NIMHD Exploratory/Developmental Research Grant Program (R21 - Clinical Trial Optional)

NIMHD invites applications to support short-term exploratory or developmental research projects that have the potential to break new ground in the fields of minority health and/or health disparities or extend previous discoveries toward new directions or applications that can directly contribute to improving minority health and/or reducing health disparities in the U.S.

For more information please visit the [website](#).

[Research Career Development Awards \(K-Series\)](#) - National Institutes of Health (NIH). **Application deadlines vary**

[NIH Loan Repayment Programs \(LRPs\)](#). **Application deadlines vary**

Social Epigenomics Research Focused on Minority Health and Health Disparities (R01- Clinical Trial Not Allowed) | Applications are due November 8, 2021 | [PAR-19-372](#)

NCI Mechanisms of Disparities in Etiology and Outcomes of Lung Cancer in the US: The Role of Risk and Protective Factors (NEW) (R01 Clinical Trial Not Allowed) | Applications are due March 4, 2021 | [PAR-19-018](#)

NCI Mechanisms of Disparities in Etiology and Outcomes of Lung Cancer in the US: The Role of Risk and Protective Factors (NEW) (R21 Clinical Trial Not Allowed) | Applications are due March 4, 2021 | [PAR-19-019](#)

Looking for additional [funding opportunities](#)? A full list of CRCHD funding opportunities as well as select NIH opportunities is available online.

NCI's Research Interests to Improve Interprofessional Teamwork and Coordination During Cancer Diagnosis and Treatment

This [NOSI](#) highlights the Healthcare Delivery Research Program's interest in receiving investigator-initiated grant applications focused on understanding and improving interprofessional teamwork and coordination during cancer diagnosis and treatment.

Research encouraged through this NOSI includes, but is not limited to, studies that

- Identify modifiable features of **care team structure** (e.g., care team composition or organization), associated with differences in cancer care quality and patient outcomes.
- Identify modifiable features of **care team processes** (e.g., decision making, communication, coordination behaviors, collaboration, leadership) associated with differences in cancer care quality and patient outcomes.
- Identify **characteristics at the patient, caregiver, care team, delivery organization, health system, and/or community levels** that influence the functioning and effectiveness of interprofessional cancer care teams.
- Develop and test interventions designed to improve cancer care quality and patient outcomes by **modifying the structure and/or functioning** of interprofessional teams.
- Develop and test interventions designed to improve cancer care quality and patient outcomes by **engaging patients and caregivers** as members of their cancer care team.

Application and Submission Information

This NOSI applies to due dates on or after **September 25, 2019 through January 8, 2022**. Applications related to this NOSI may be submitted using the following funding opportunity announcements or future reissuances:

- [PAR-18-869](#) Modular R01s in Cancer Control and Population Sciences (R01 Clinical Trial Optional)
- [PAR-18-559](#) Cancer Prevention and Control Clinical Trials Grant Program (R01 Clinical Trial Required)
- [PA-19-056](#) NIH Research Project Grant (Parent R01 Clinical Trial Not Allowed)

BEST PRACTICES & RESOURCES



Physical Sciences-Oncology Network
Bioresource Core Facility

The Physical Sciences-Oncology Network Bioresource Core Facility (PBCF) at ATCC is an NCI-funded resource for all members of the Physical Sciences-Oncology Network (PS-ON), Cancer Systems Biology Consortium (CSBC), and all NIH-funded cancer researchers. The PBCF serves as a centralized distributor and repository providing common stocks of an authenticated set of non-malignant and cancerous cell lines, cell culture reagents, and related standard operating protocols. Datasets of published work using the PBCF cell lines are requested to be reported to the PBCF and the NCI.

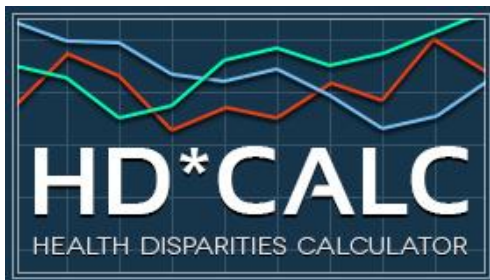
For more information, please visit the [website](#).



Join NRMN Today!

Our resources include mentor certification, professional development webinars, a social networking platform called MyNRMN, and facilitator certification through the Center for the Improvement of Mentored Experiences in Research (CIMER)

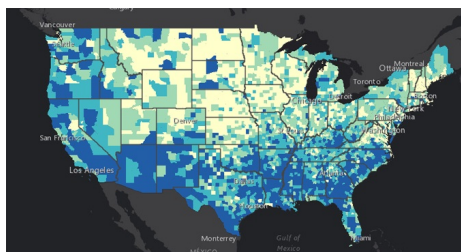
For more information, please view the [flyer](#).



To download the new Health Disparities Calculator 2.0, please visit the following [website](#).

Health Disparities Calculator 2.0

The Health Disparities Calculator (HD*Calc) is statistical software designed to generate multiple summary measures to evaluate and monitor health disparities (HD). HD*Calc was created as an extension of [SEER*Stat](#) that allows the user to import SEER data or other population-based health data, such as National Health Survey sample data from the National Health Interview Survey (NHIS) or the Behavioral Risk Factor Surveillance System (BRFSS), and calculate any of eleven disparity measures.



Centers for Disease Control and Prevention Social Vulnerability Index

Social vulnerability refers to the resilience of communities when confronted by external stresses on human health, stresses such as natural or human-caused disasters, or disease outbreaks. Reducing social vulnerability can decrease both human suffering and economic loss. CDC's Social Vulnerability Index uses 15 U.S. census variables at tract level to help local officials identify communities that may need support in preparing for hazards; or recovering from disaster.

The Geospatial Research, Analysis, and Services Program (GRASP) created and maintains CDC's Social Vulnerability Index. For more information visit [here](#).

- [AACR Annual Report 2020](#)
- [Culturally and Linguistically Appropriate Services \(CLAS\) in Maternal Health Care](#)
- [Culturally and Linguistically Appropriate Services \(CLAS\) in Maternal Health Care](#)
- [Healthcare Delivery Research Program \(HDRP\) Sample Grant Applications](#)
- [Building Diverse Mentoring Networks that Transcend Boundaries in](#)

Cancer Research

- [Mil Gracias \(A Thousands Thanks\) for Not Smoking Indoors!](#)
- [American Cancer Society Facts and Figures 2021](#)
- [Similarities in Risk for COVID-19 and Cancer Disparities](#)
- [Scholarships for Latino Students](#)
- [PhenX Social Determinants of Health Assessments Collection](#)
- [The Diversity–Innovation Paradox in Science](#)
- [Differences in Stage of Cancer at Diagnosis, Treatment, and Survival by Race and Ethnicity Among Leading Cancer Types](#)
- [2020 AACR Annual Report](#)
- [AACR Cancer Progress Report 2020](#)
- [AACR Cancer Disparities Progress Report 2020](#)
- [Cancer Health Disparities | Did You Know? - NCI](#)
- [Promoting Yourself, Your Research and the New NIH Biosketch.](#)
- [NIH Biosketch - What is new in the New Biosketch?](#)
- NIH Tips on [Writing Your Grant Application](#)
- Find Funded NIH Projects - [NIH Reporter](#)
- [Cancer Health Disparities Definitions - NCI](#)
- [Public Health Employment Connection](#) - Updated Job Opportunities Nationwide
- [Jobs @ NIH](#) - Explore jobs and training opportunities
- [Colorado Health Literacy Coalition](#)
- [Communicate Health](#)
- [Health Literacy Media](#)
- [Health Literacy Research Conference](#)
- [Institute of Healthcare Advancement \(IHA\)](#)
- [National Academy of Sciences: Roundtable on Health Literacy](#)
- [Wisconsin Health Literacy](#)

Connect with your GMaP Partners

**UAB at Birmingham
University of Arkansas - MS
Moffitt Cancer Center
University of Miami
Bethune Cookman University
Emory University
Florida A & M University
Morehouse School of Medicine
Xavier University of Louisiana
Louisiana State University
Tulane University
University of Florida
University of Mississippi
Washington University in St. Louis
Ponce Health Sciences University**

**[Tiffany Carson](#)
[Michael Preston](#)
[Cathy Meade](#)
[Cynthia Thiry](#)
[Deanna Wathington](#)
[Theresa Gillespie](#)
[Renee Reams](#)
[Brian Rivers](#)
[Margarita Echeverri](#)
[Lucio Miele](#)
[Asim Abdel Mageed](#)
[Diana Wilkie](#)
[Roy Duhé](#)
[Aimee James](#)
[Idhaliz Flores](#)**

Cancer Training at NCI

STAY CONNECTED



Become a GMaP Partner and stay connected. Let us know what information you want to know, how can we better help, or if you're interested in collaboration. Do you want us to highlight your programs? Join [GMaP Region 2](#) today and let us know what information you want us to feature in our next newsletter!



GMaP Region 2 | 813-745-8726 | GMap.Region2@moffitt.org | [Website](#)

**You are receiving this email as a Cancer
Researcher in GMaP Region 2**


EN'S
th Month


EN'S

MEN'S

MEN'S

MEN'S