



T B C C N
Tampa Bay Community Cancer Network
A Community Network Program Center
at H. Lee Moffitt Cancer Center & Research Institute

*Creating Partnerships
For Better Health*

June 2014

Summer Edition

WHAT'S INSIDE TBCCN

Komen Creates Educational Calendar	1
Community Partners' Highlights	2
Research Corner	4
Training Experience	6
Upcoming Events	8

Tampa Bay Community Cancer Network

2014 Komen Florida Suncoast Partners With TBCCN To Create Educational Calendar

Written by: Kaytlyn Burke

Susan G. Komen Florida Suncoast, is a local breast cancer foundation dedicated to saving lives and ending breast cancer. 75% of the money raised remains in the Tampa Bay area to fund grant programs that provide education, screening, diagnosis and treatment to uninsured, low-income women. The remaining 25% is dedicated to international breast cancer research projects.

In addition to fundraising, I work on many outreach projects outside of the grant program to encourage women to get screened for breast cancer. One of these projects is called Worship in Pink, which is a breast cancer awareness event that takes place during Mother's Day weekend. Local faith-based organizations are recruited to share breast health information with their congregations, celebrate survivors, and remember those who have lost their battle against breast cancer. Komen Florida Suncoast provides each church with various educational materials and goodies for their congregations.



2014-2015 Worship in Pink Calendar

This year, we were proud to receive funding from TBCCN to create a breast cancer education calendar for our annual Worship in Pink celebration. The calendar includes breast and cervical cancer messaging and is also a lovely and functional tool for everyday use. It is our hope that more women will hold on to these calendars and use them throughout the year for a lasting educational impact. This year, we distributed over 4,000 calendars to churches in Sarasota, Manatee, Hillsborough, and Pinellas counties! We are so thankful for the support of TBCCN which helped make this project possible. ↑

CANCER EDUCATION WORKSHOPS

*Is your organization interested in
having TBCCN provide cancer
education sessions for your community?
Please contact us.
We can help.*

1-866-84-TBCCN

**FOR MORE INFORMATION
ON OUR EVENTS,
TRAINING & WORKSHOPS
VISIT US AT:**



twitter @TBCCN

call 1-866-84-TBCCN

COMMUNITY PARTNERS HIGHLIGHTS

14th Annual Men's Health Forum

Written by: Erika Harris

On March 8, the 14th annual Men's Health Forum was held at the USF Marshall Student Center.

Nearly 600 men registered and attended the forum along with their families. The forum is a collaboration of more than 80 local hospitals, health care organizations and social service organizations. Moffitt's annual Men's Health forum is led by Moffitt Diversity with support from team members and departments throughout the institution. Screenings available to men in attendance included cholesterol, blood pressure, body mass index, blood glucose, depression, hearing, memory, skin cancer, vision, Hepatitis A/B/C, substance abuse, and HIV/AIDS/

STI. More than 140 community volunteers made the event successful. Nearly 300 men were eligible and received prostate cancer screening vouchers through Moffitt's Screening and Prevention Program; and the Mole Patrol® provided skin cancer screenings to more than 170 individuals. Sponsors for the Forum included Fifth Third Bank, Florida Blue, New York Yankees, National Orders, Inc., Movember Stache League, and the Hillsborough Area Regional Transit (HART). Media partners included Genesis 680 AM, Bright House Networks, Super Q 1300 AM and 88.5 FM WMNF. More information about the Men's Health Forum can be found at MHFTampa.com. ↑



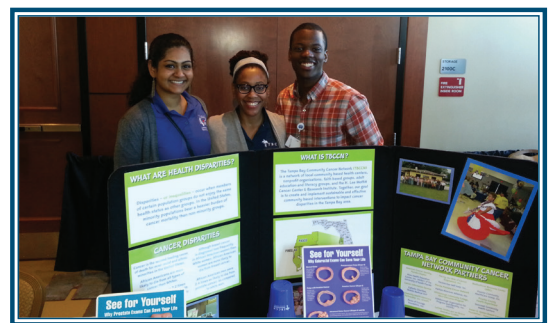
Vice President of Moffitt Diversity and Community Relations, Dr. B. Lee Green with Tampa Mayor, Bob Buckhorn



Moffitt's Diversity Team at the Men's Health Forum



Walmart Vision Center provides vision screenings at the Men's Health Forum



TBCCN's health educator and LINK students disseminate health information at the Men's Health Forum

COMMUNITY PARTNERS HIGHLIGHTS

7th Annual Re-Entry Expo

Written by: Gloria Elliott, BSN

On May 17th, the Lee Davis Advisory Board, in partnership with TBCCN, ACLU, and NAACP hosted the 7th annual Re-entry Resource Expo. This event provided an array of engaging workshops including skills training, health education, and a fashion show. The workshops were intended for the general community and to empower those that need assistance in becoming self-sufficient and re-entering the workforce after experiencing various challenges.

The Expo was held at the Lee Davis Neighborhood Service Center from 9:00 AM-2:00 PM. The goal of the annual event was to provide self-empowerment training, self-help tools and health education to help attendees re-enter the workforce as well as improve their own health and self-image. The workshops were presented during morning and afternoon sessions. There were approximately 100 attendees at the event.

*Hosted proudly by the
West Central Region Advisory Board Inc. &
TBCCN at Moffitt Cancer Center
In partnership with the ACLU and NAACP*

COOL networking opportunities
ENGAGING workshops
FREE expert panel luncheon discussion
GREAT live music
HUGE vendor showcase

7th Annual Reentry Resource Expo

**Saturday, May 17, 2014
9:00a.m. to 2:00p.m.**

Hillsborough County Lee Davis
Neighborhood Services Center
3402 North 22nd Street
(Corner of 22nd Street & 26th Avenue)
Tampa, FL 33605

- Business Networking
- Food and Music
- **FREE** Health Screenings by TFHC Mobile Unit
- Market yourself to new customers

Over **20** business exhibitors & Full day of **FREE** expert workshops!

- Educational Opportunities
- Federal Bonding/Job Skills Training
- Grooming & Self Image Fashion Show
- Health Disparities/Mental Health Counseling
- Housing Opportunities
- Motivational Speakers
- Nutrition
- Rights Restoration/Sealing of Records/Expungement
- ...and **MORE!**

Bring Friend Share the World!

Sally's Cosmetology Nails
Aristyles

TBCCN
Tampa Bay Community Center
1000 N. High Street, Suite 1000
Tampa, FL 33606

For more information, call 813-274-8152 or email neighborhoods@tampagov.net

Over 20 vendors participated in the event and provided information on a variety of issues. Free health screenings were provided by the Tampa Family Health Center Mobile Unit on site. The workshops included: Federal Bonding, Jobs Skills and Opportunities, Rights Restorations, “How to get records sealed and expunged” and “Dress to Impress a potential employer.” The health workshop focusing on colorectal cancer was presented by TBCCN. It was entitled “Trust your Gut” and was led by TBCCN’s own, Swapomthi Govindaraju and Alyssa Schmidt. Breast and cervical cancer education was provided by one of Moffitt’s M-POWER health educators, Dr. Taiwo Talabi. Following the workshop presentations there was an Expo panel discussion, followed by a question and answer session with the attendees. This discussion was facilitated by Lee Davis Manager, Cassandra Blaylock. Overall, the event received great feedback from the attendees. They felt the workshops were informative and relevant. ↑

Addressing Abnormal Pap Test Results among Women in Hispanic Migrant Farmworker Community

Written by: Cheryl Vamos, PhD, MPH

Since the 1950's, cervical cancer rates have been on the decline in the U.S., largely due to the introduction of the Pap test. However, despite decreases in overall cervical cancer morbidity and mortality, racial/ethnic disparities persist. For instance, Hispanic women have the highest incidence of cervical cancer and the third highest cervical cancer mortality rate when compared to all other racial/ethnic groups. Moreover, within the Hispanic population, migrant farmworkers are at increased risk for cervical cancer due to lack of: 1) screening (via Pap tests); or 2) early and ongoing treatment and care. Barriers to cervical cancer screening and treatment among this population include: low knowledge/awareness (e.g., believe only need Pap test if develop symptoms); health care issues (e.g., lack of health insurance; inability of provider to speak Spanish); psychosocial issues (e.g., embarrassment, fear); and structural and environmental issues (lack of transportation and childcare, work conflicts, and concerns regarding immigration status).

Community Partnership: Catholic Mobile Medical Service (CMMS), an integral partner of the Tampa Bay Community Cancer Network (TBCCN), strives to provide culturally competent medical care to rural, low-income community members (primarily Hispanic farmworkers) residing in Southeast Hillsborough County. Past and current collaborative efforts between CMMS and TBCCN have included increasing awareness and access to cervical cancer screening through the use of patient navigators and culturally appropriate health education materials. Thus, building on these efforts, the next logical step in the cervical cancer continuum is to identify the additional gaps that remain among women who receive an abnormal Pap test. The etiology of cervical cancer and its association with HPV is complex, and assuring women who receive an abnormal Pap test understand the potential complications and the required follow-up care remains a health literacy priority

Purpose: Expanding on existing partnerships, the purpose of this current project is to identify leverage points that can improve health literacy skills and increase the capacity of follow-up care among women with an abnormal Pap test result. Specific objectives include:

- 1) Determine the level of understanding and the psychosocial impacts among women who have received an abnormal Pap test result
- 2) Identify assets and barriers that facilitate and/or hinder the necessary follow-up care
- 3) Elicit women's educational needs and communication preferences, including channels and methods for receiving information.



RESEARCH CORNER

Addressing Abnormal Pap Test Results among Women in Hispanic Migrant Farmworker Community Contd.

Project Update: The following activities have successfully been completed to date:

- Hired and trained Spanish-speaking research assistant
- Developed semi-structured interview guide based on previous literature and the Social Cognitive Theory
- Translated interview guide and program documents (e.g., Informed Consents, Participant Profile Sheet) into Spanish
- Back-translated documents into English to ensure cultural and linguistic appropriateness
- Received IRB approval
- Recruited and successfully conducted 15 interviews in Spanish
- Translated and transcribed the interviews into English
- Preliminary and ongoing analyses to identify themes and key findings

Next steps are to continue recruitment and data collection among the final participants; complete data analysis; and prepare for future projects and external grant proposals.



Patient Navigator, Gloria Arroyo, featured here with the project's research assistant, Elizabeth Lockhart.

Special Acknowledgements: The success of this project is due to the partnership with CMMS at the San Jose Mission and the guidance obtained by the project mentors. Specifically, Dr. Kristi Wells (Academic Mentor), Sr. Sara Proctor (Community Mentor), and Gloria Arroyo (Patient Navigator) have provided instrumental information and support regarding the conception of this project; the background and context for this patient population; the development and revisions of the interview guide; participant recruitment; and preliminary analysis of key findings. In addition, Elizabeth Lockhart (Research Assistant, Doctoral Student in College of Public Health) has played an essential role in participant recruitment, conducting the interviews in Spanish, and assisting with data analysis.

Future Implications: This pilot study is critical in guiding future work that seeks to develop and test innovative, community-based interventions that inform and empower low-income migrant Hispanic women to continue with the necessary follow-up care, ultimately contributing to the decrease in cervical cancer health disparities. By addressing health literacy skills, this project may also have significant applications to other cancer or reproductive health-related issues that adversely affect this population. ↑

TRAINING EXPERIENCE

LOCAL STUDENTS PARTICIPATE IN TBCCN JOURNAL CLUB

Written by: Martine Dorvil

Bowers/Whitley Career Center, a Hillsborough County Public School, permitted some of its current nursing students to participate in the February TBCCN Journal Club. This journal club focused on a randomized trial of social media usage, in particular Facebook, and young cancer survivors. The title of the selected article was “Facebook-based physical activity intervention for young adult cancer survivors” by Carmina G. Valle, Deborah F. Tate, Deborah K. Mayer, Marlyn Allicock and Jianwen Cai.

Prior to attending the journal club, students read the journal article and held a discussion session at the school. This discussion evaluated the manner in which the randomized trial was conceptualized and its findings. As a result of this discussion and their attendance at the journal club, they expressed their desire to become more engaged in such events. Students felt that they had much to contribute at all levels of research targeting not just youth cancer survivors, but youth in general. Students felt that they could contribute to the conceptualization, design of assessment tools (surveys/questions) and evaluation of such research projects.

Youth participatory evaluation (YPE) is slowly gaining popularity due to the Wingspread Symposium on Youth Participation in Community Research. The main purpose of the symposium was to promote this practice and advance this concept. This approach is inclusive of young people in evaluating programs, organizations, and systems designed to serve them. This process allows young individuals to conduct research on issues and experiences such as the journal club, since it affects them directly.

The Wingspread Symposium’s overarching statement best sums up youth-engaging activities such as this February’s TBCCN Journal Club: “youth participation in community evaluation research is conceived as a democratic process that seeks to equalize power between youth and adults, recognize their respective roles and responsibilities, and places special emphasis on involving those youth that are traditionally underrepresented.”

Bowers/Whitley Career Center provides quality performance based career preparation programs and training facilities for at-risk youth. The nursing program prepares students for employment as nursing assistants and/or nurse aids in nursing homes, hospitals, or other healthcare facilities. ↑



Bowers-Whitley Career Center in Tampa, Florida

Upcoming Events

¡Gratuito!
¡Rifas y comida!

¡Salud! Serie de charlas

Supervivencia: La vida después del diagnóstico de cáncer



- La supervivencia y usted
- La importancia de los grupos de apoyo
- Nutrición para el superviviente
- Técnicas para ejercitarse
- Sesión de preguntas

Sábado, 19 de julio de 2014

De 10:30 a.m. a 1:30 p.m.

Moffitt Cancer Center
12902 Magnolia Drive
Edificio *Stabile Research Building*
Tampa, Florida 33612

Para confirmar su asistencia o recibir más información, llame al (813) 745-1988
o envíe un correo electrónico a PSM-MCC.Partnership@moffitt.org.

Evento presentado por:



Ponce School of Medicine
Moffitt Cancer Center
Partnership



Upcoming Events

WOMEN OF COLOR CANCER RETREAT

WOMEN OF COLOR CANCER RETREAT

August 1-3, 2014

Join Faces of Courage Foundation as "women of color" are united together for a weekend retreat to share the joys of life, celebrate survival and bond under the many colored ribbons of cancer.

Open invitation to all women of courage everywhere.

This **no cost**, three day, two night program (in air conditioned cabins), delivered in the style only Faces of Courage Foundation can generate, will feature fun and exciting experiences that will challenge, energize and rejuvenate one hundred women currently diagnosed, in treatment for, or survivors of all types of cancers.

Enjoy a weekend of speakers, music, dance, arts and crafts, and food...spiritual and ecumenical services...spa treatments...the wise joined together with the brave...all culminating in voices lifted in song and celebration.

Cancer is Serious,
Camp is Serious FUN!

To register call (813) 948-7478

10006 Cross Creek Blvd., #519
Tampa, FL 33647
psherry@facesofcourage.org
www.facesofcourage.org

